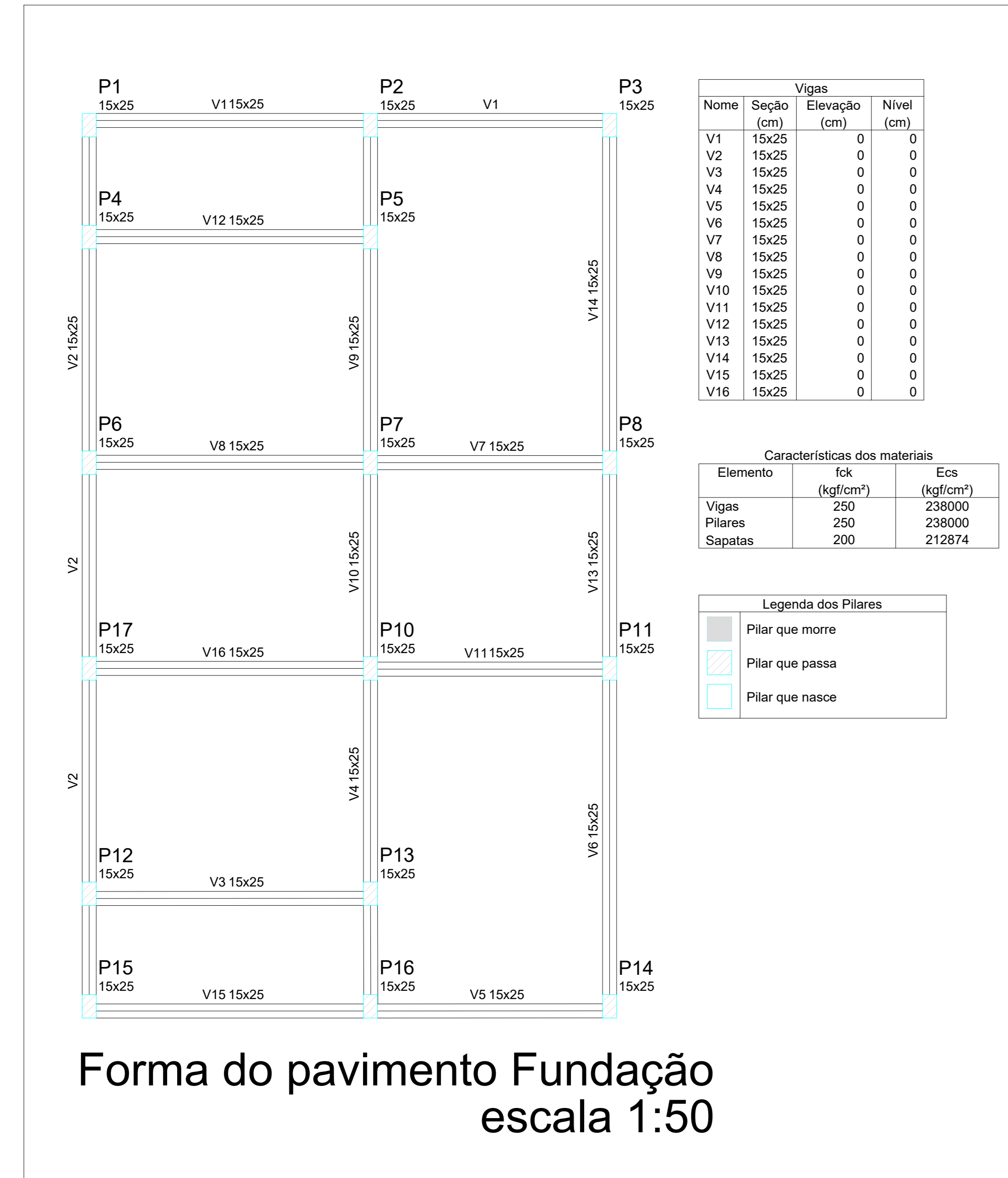
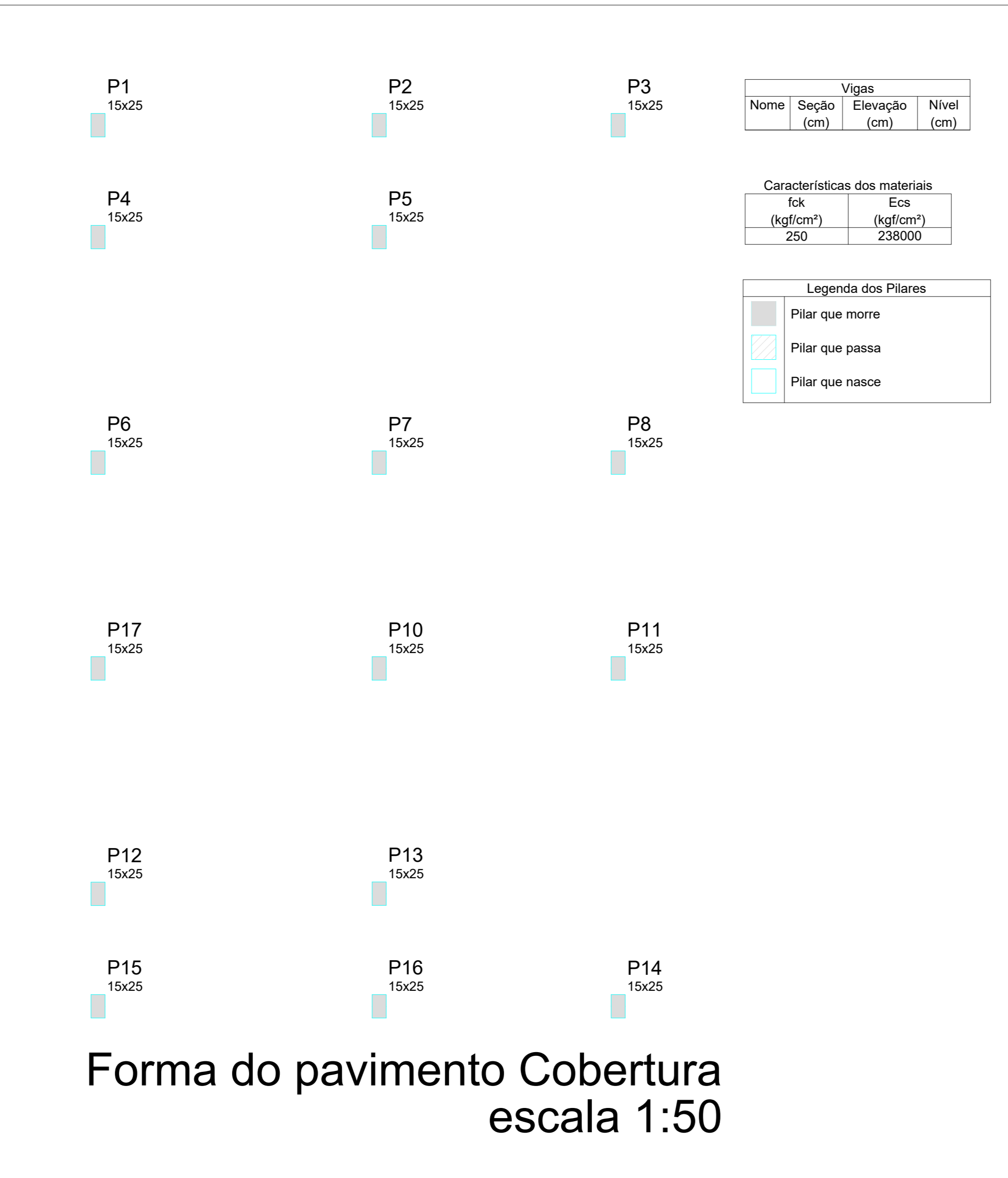


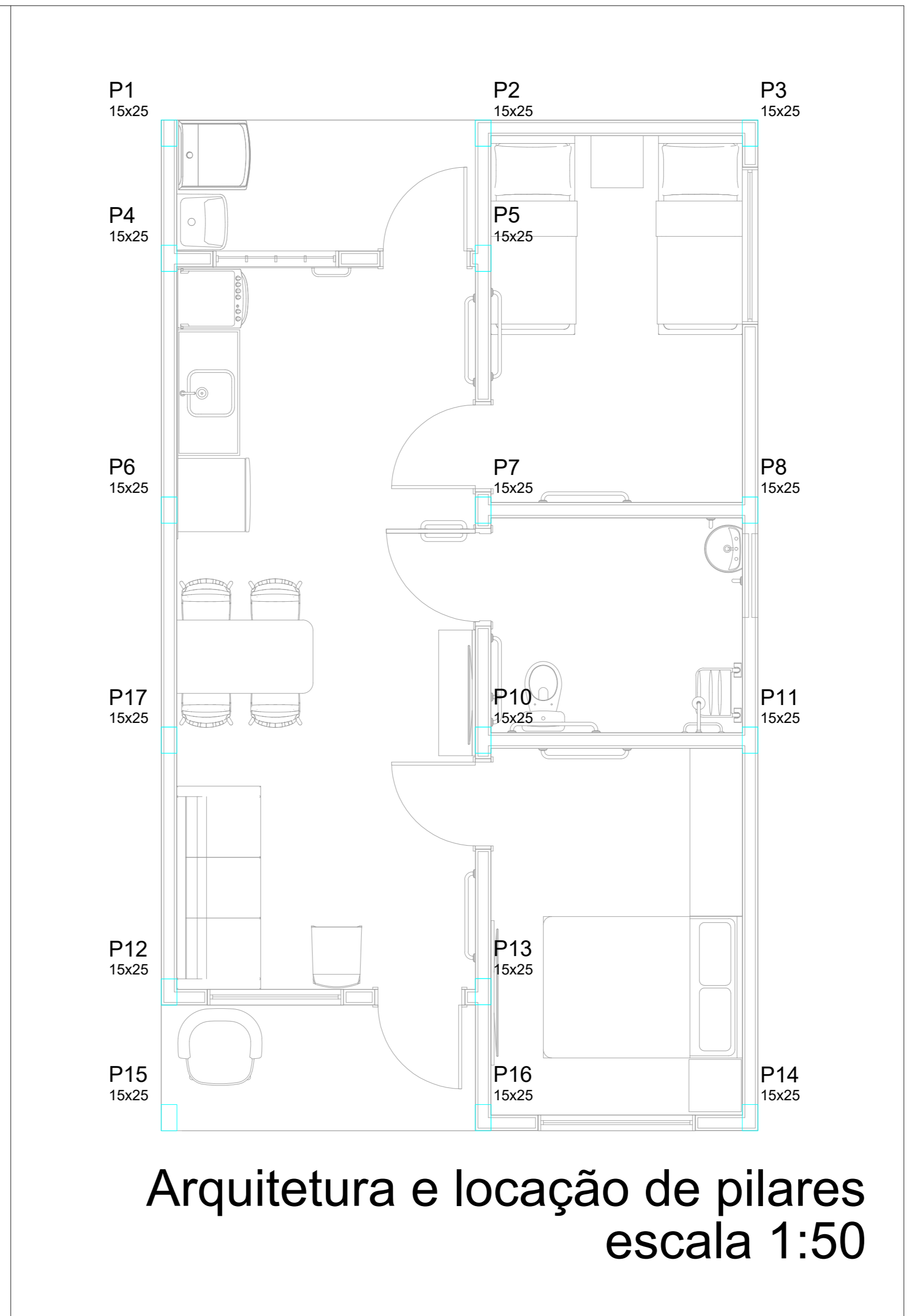
Forma do pavimento Laje
escala 1:50



Forma do pavimento Cobertura
escala 1:50



Arquitetura e locação de pilares
escala 1:50



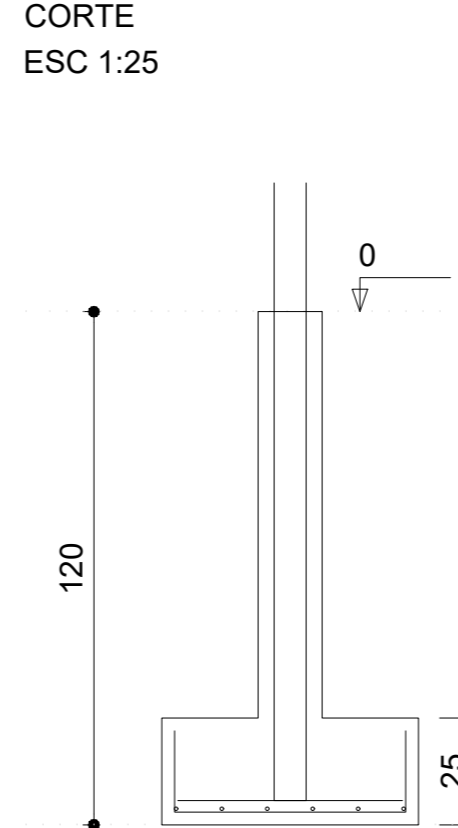
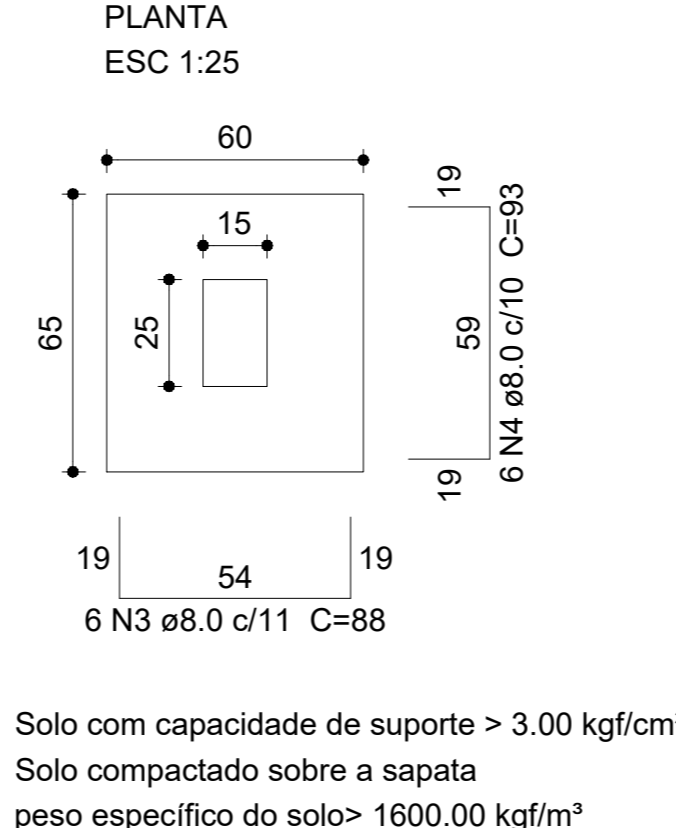
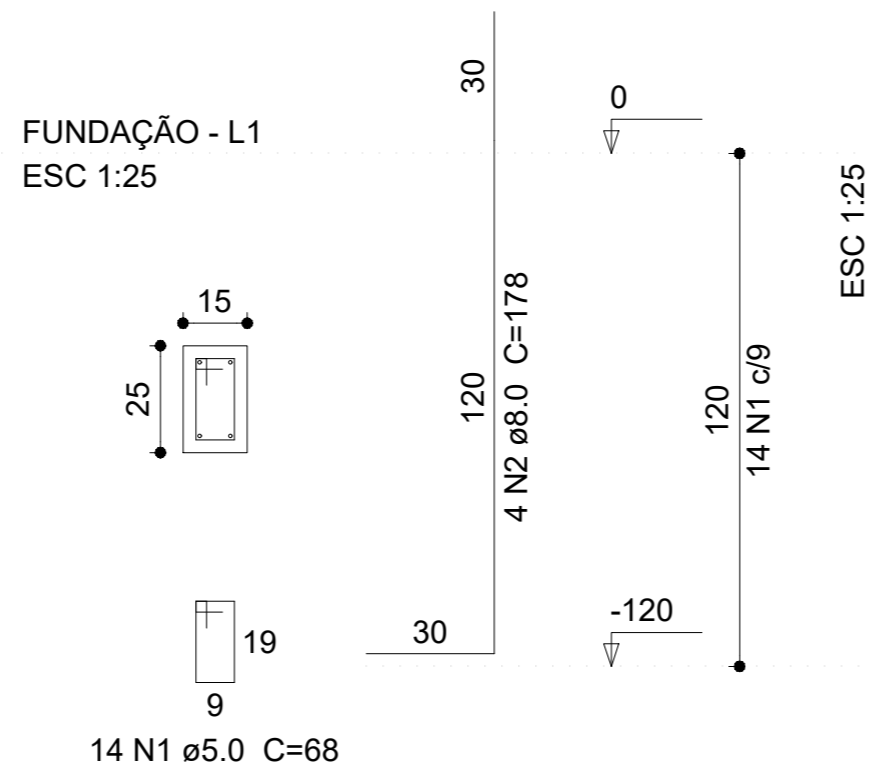
PROJETO DE ESTRUTURAS DE CONCRETO ARMADO			
Título: UNIDADE HABITACIONAL - MCMV FNHIS			
Proprietário: PREFEITURA MUNICIPAL DE PIMENTEIRAS - PI			
REVISÕES:		Conteúdo da Prancha	
- Rev 00		PLANTA DE LOCAÇÃO, PILARES NA ARQUITETURA, PLANTA DE FORMA FUNDAÇÃO, PLANTA DE FORMA TERREO.	
Escala:	Indicada	Data:	Endereço da Obra:
2025		ZONA URBANA	
PROJETO			
CONSTRUÇÃO			
CLIENTE			

Folha

A1

01/04

FUNDAÇÕES E ARRANQUES

$$P_1=P_2=P_3=P_4=P_5=P_6=P_7=P_8=P_9=P_{10}=P_{11}=P_{12}=P_{13}=P_{14}=P_{15}=P_{16}$$
$$S_1=S_2=S_3=S_4=S_5=S_6=S_7=S_8=S_9=S_{10}=S_{11}=S_{12}=S_{13}=S_{14}=S_{15}=S_{16}$$


REALAÇÃO DO AÇO DAS FUNDAÇÕES E ARRANQUES DE PILARES

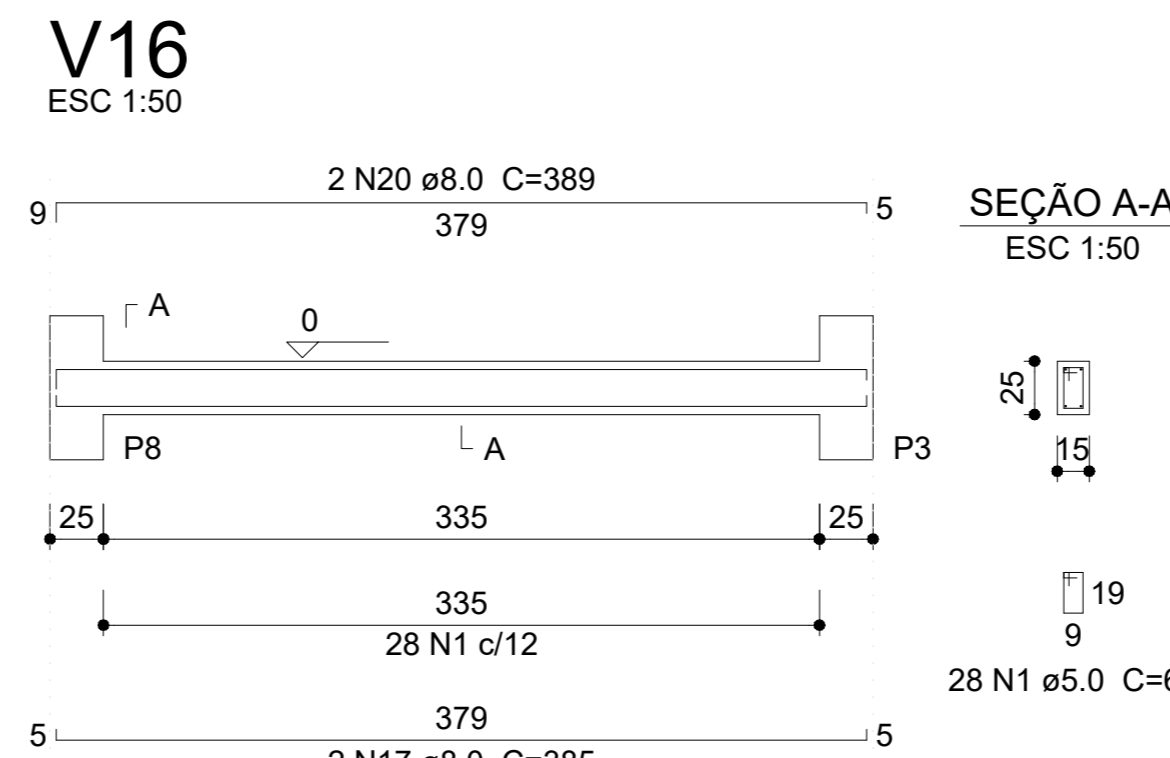
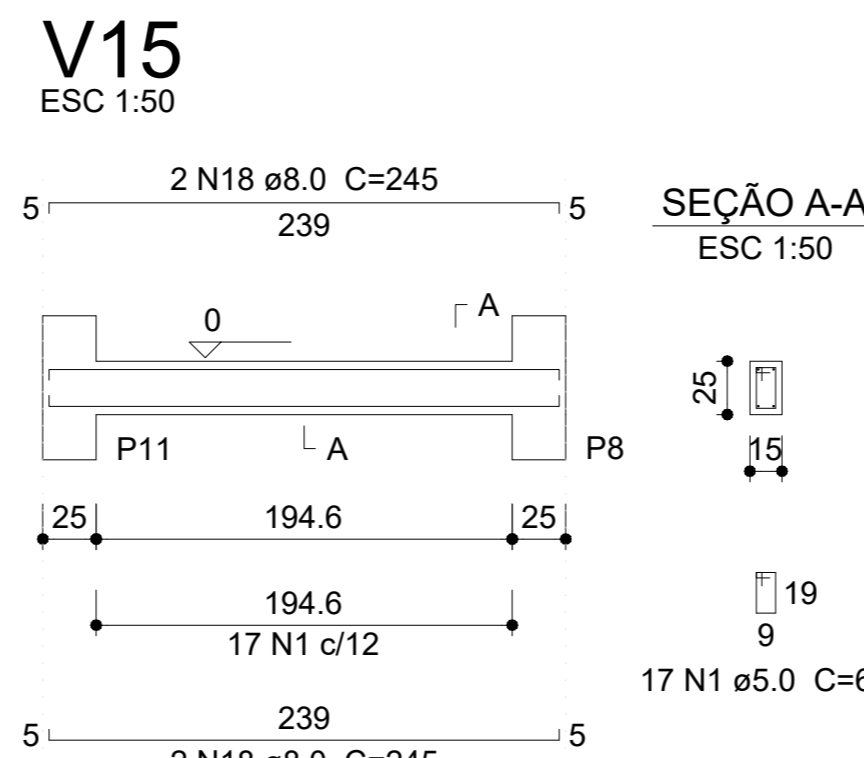
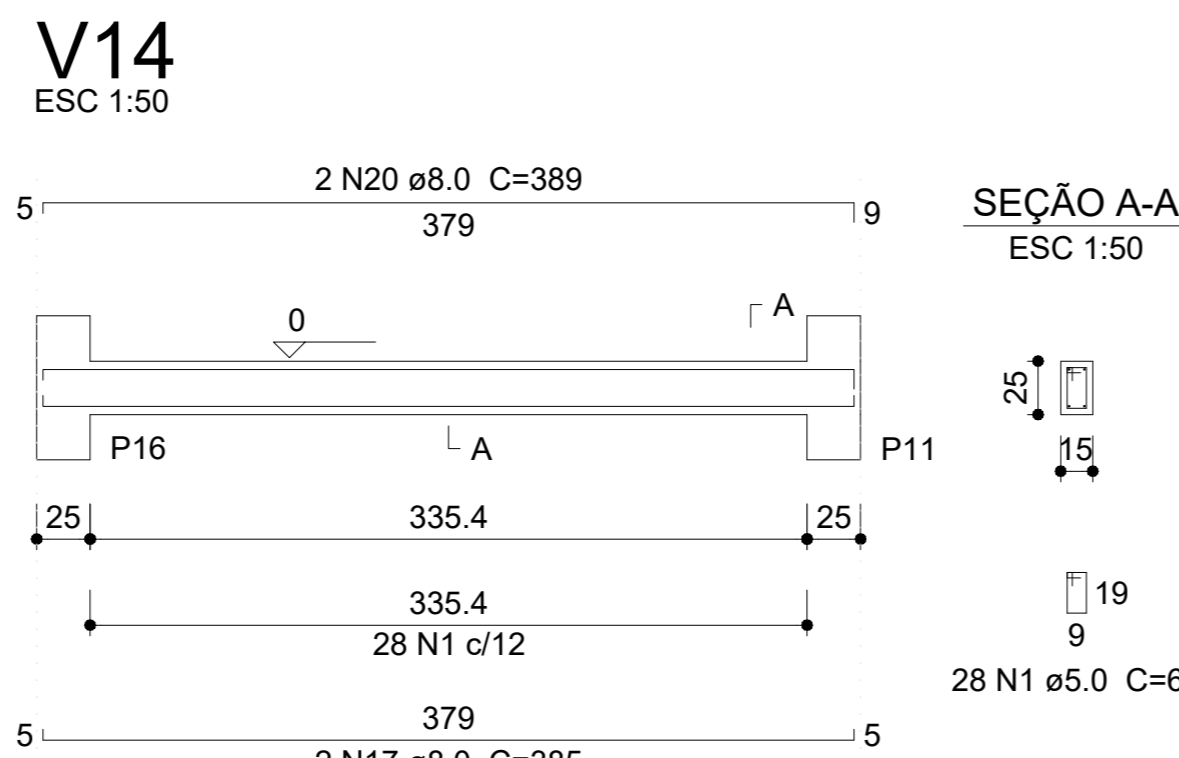
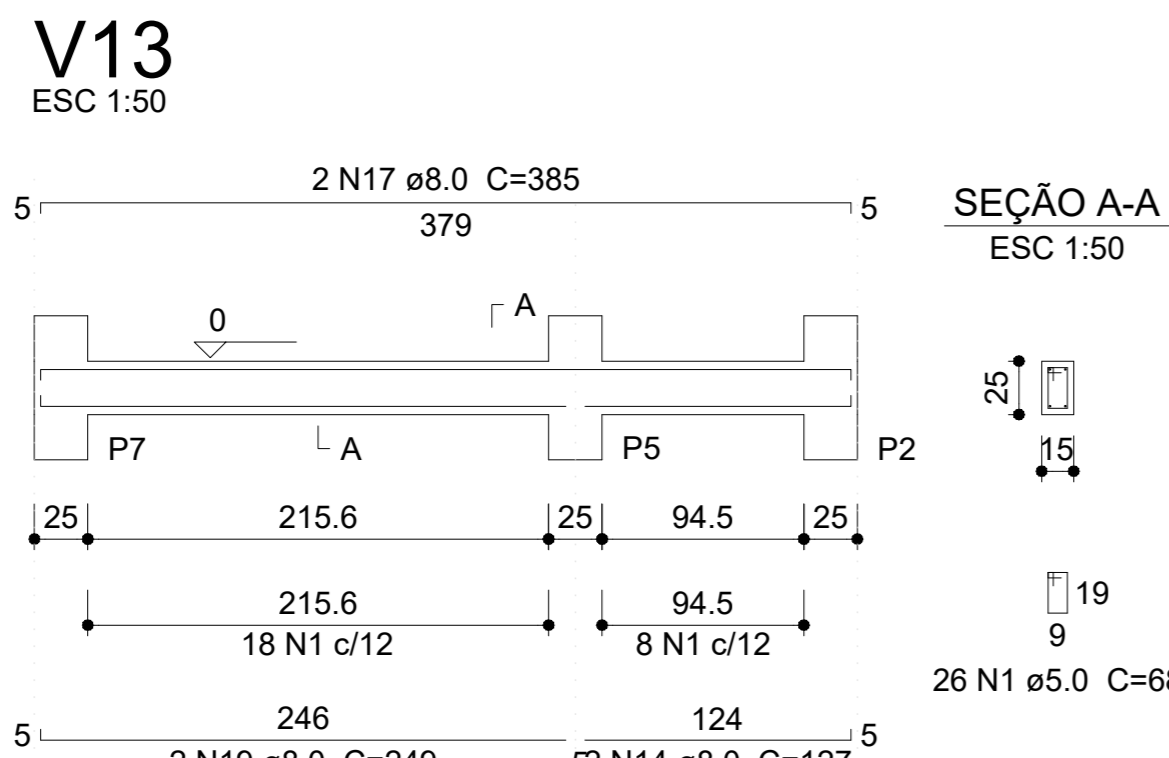
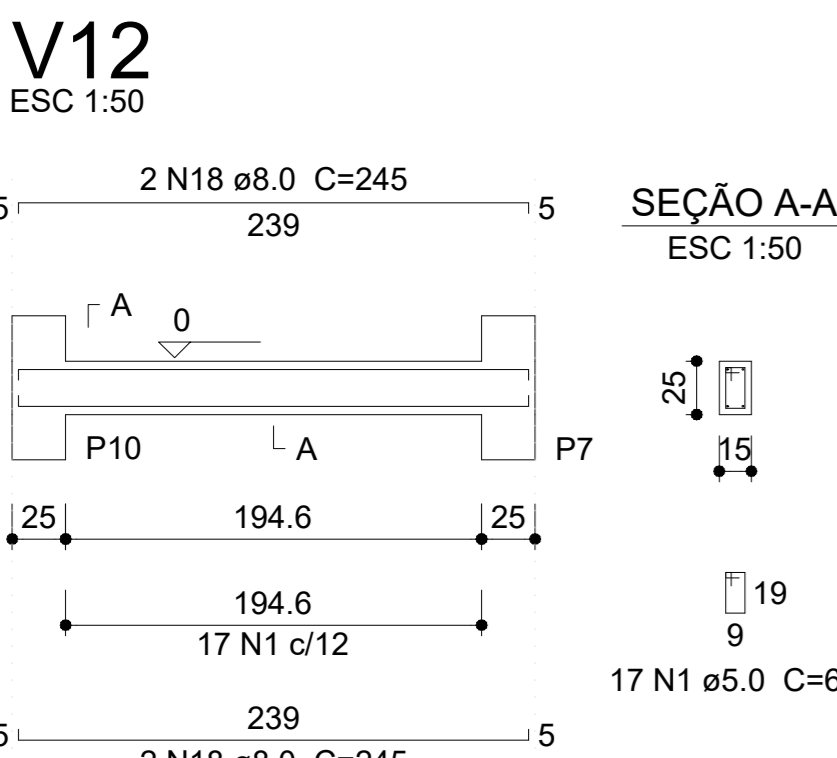
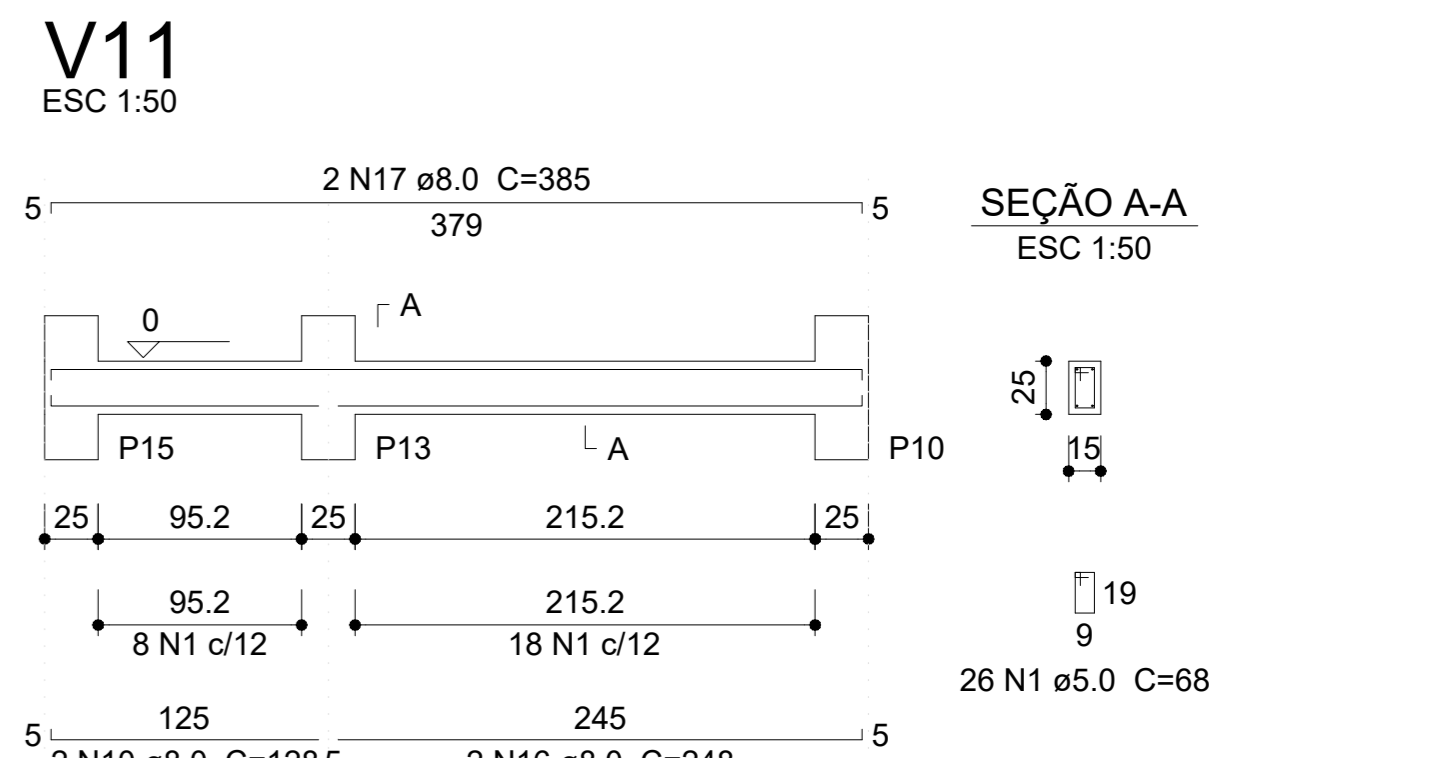
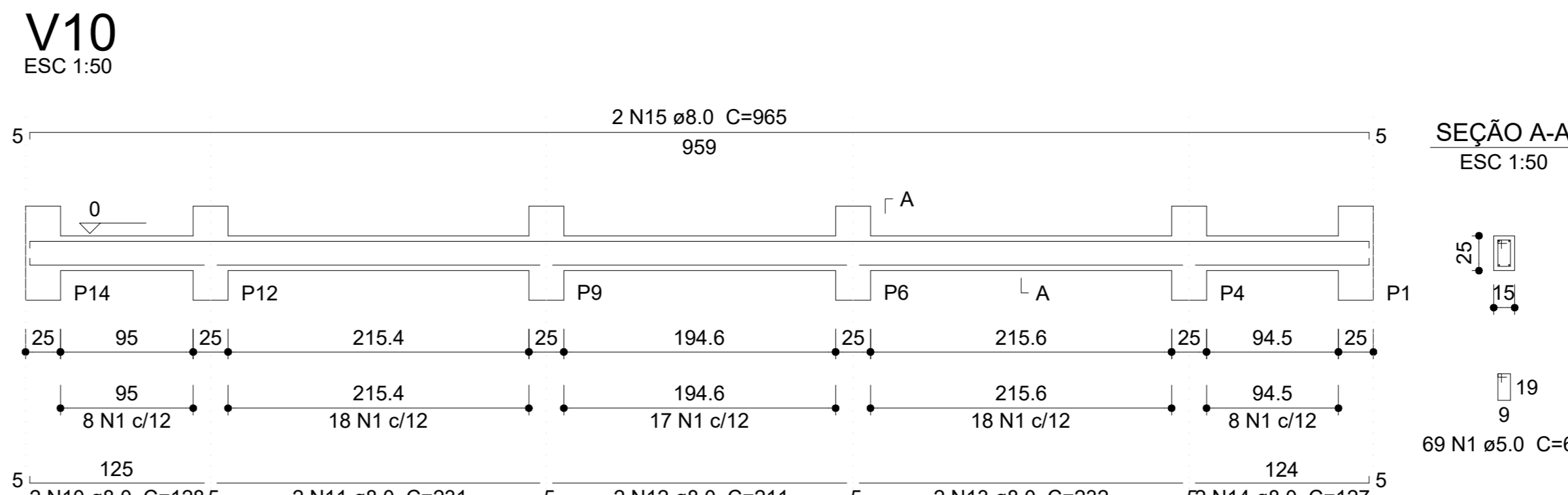
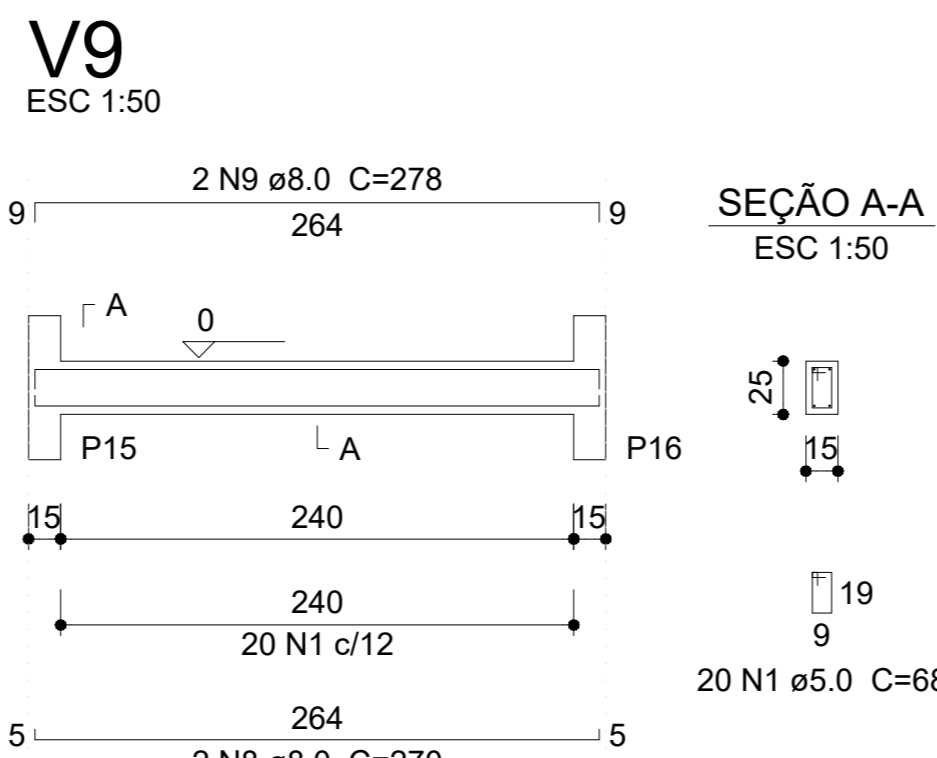
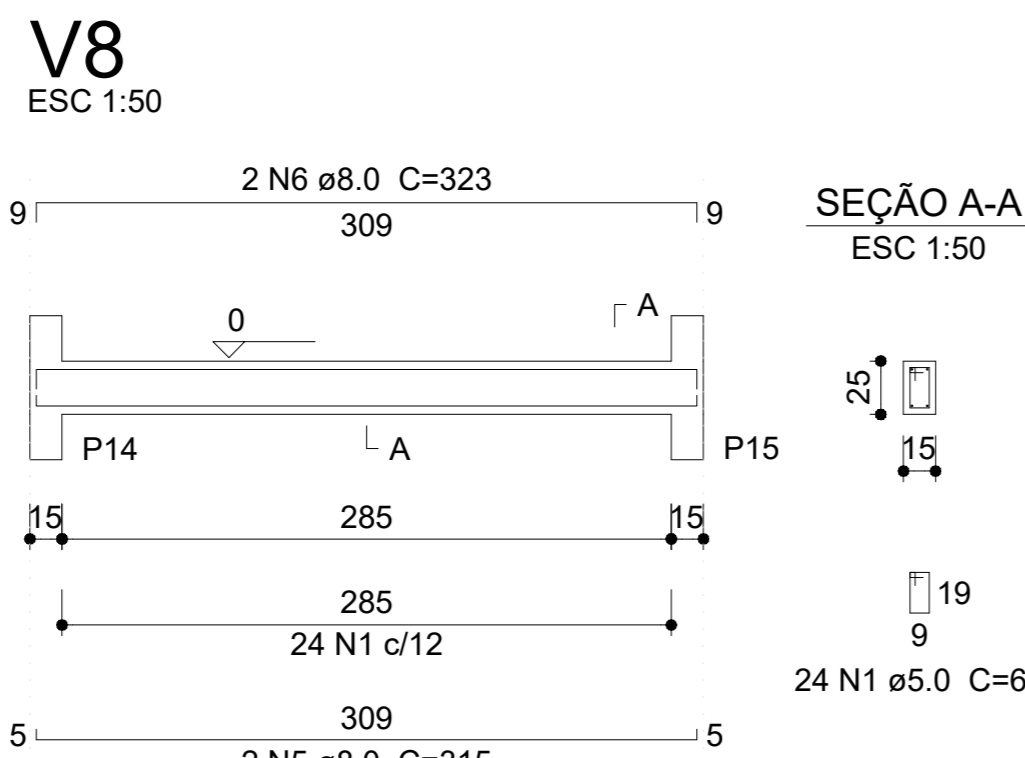
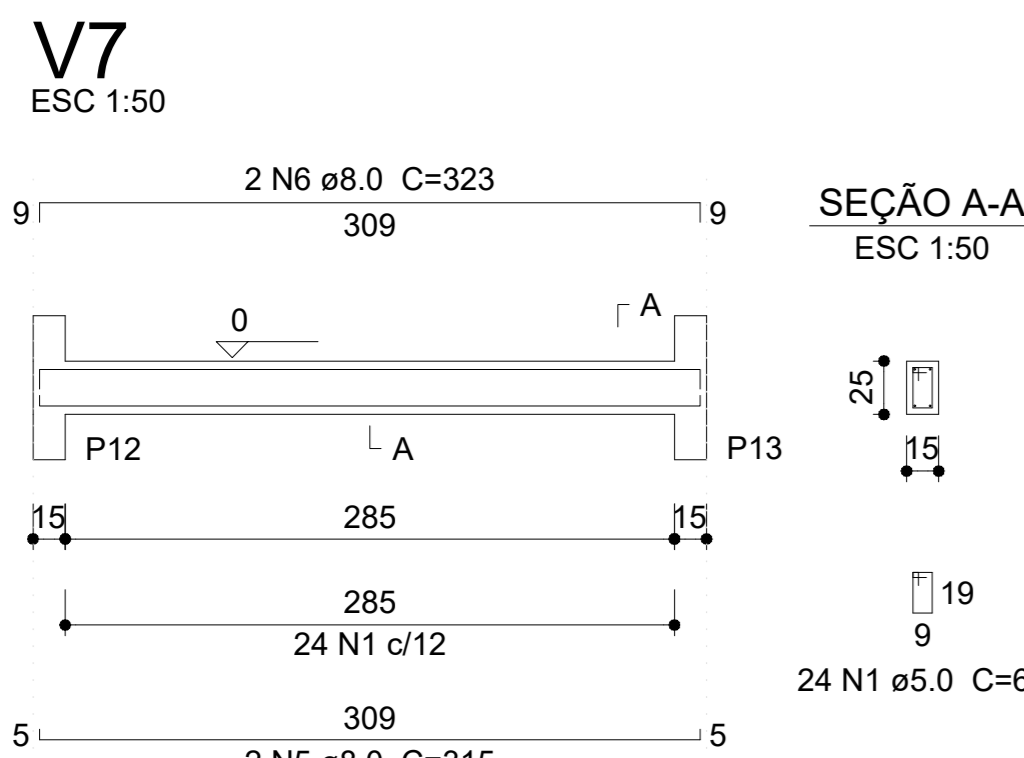
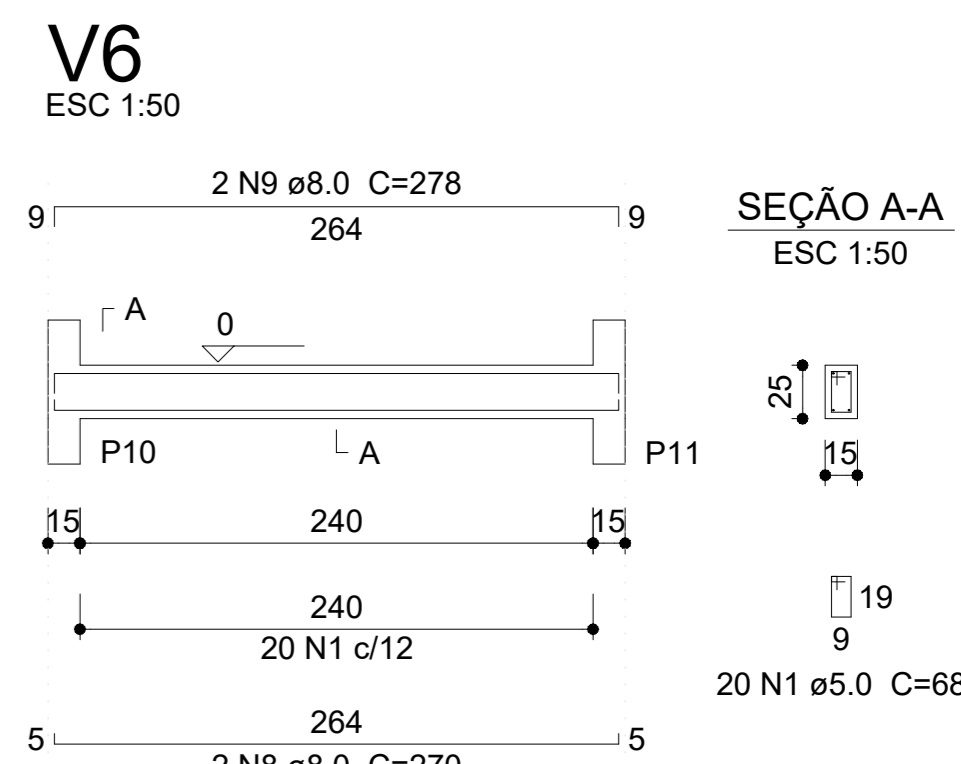
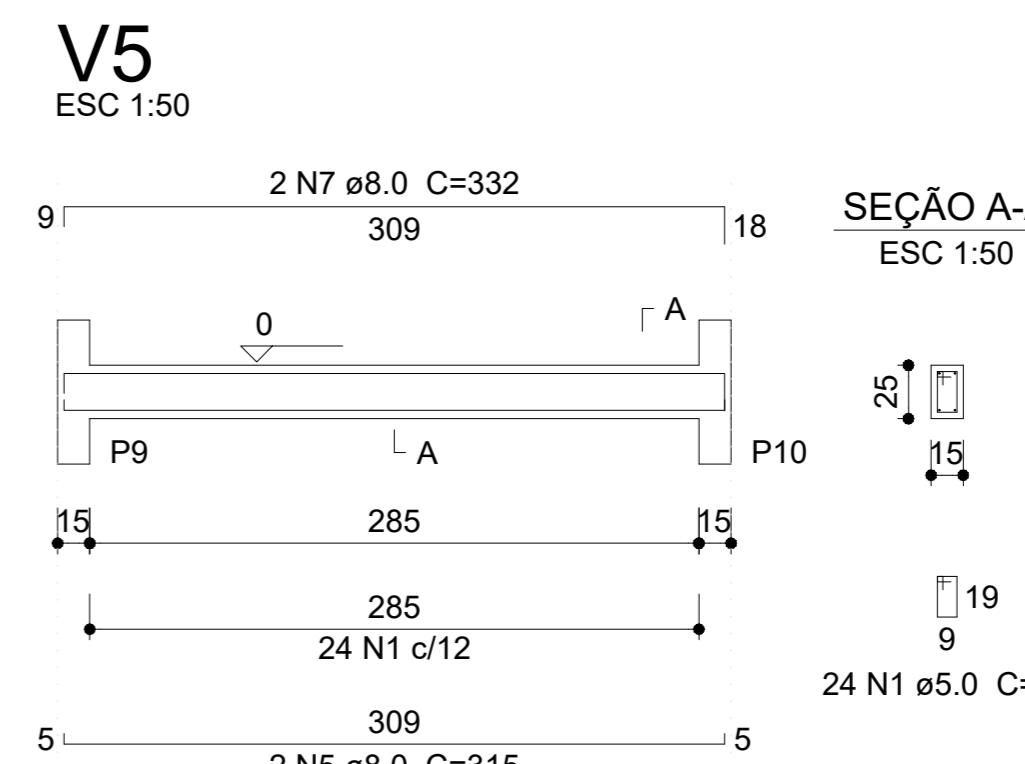
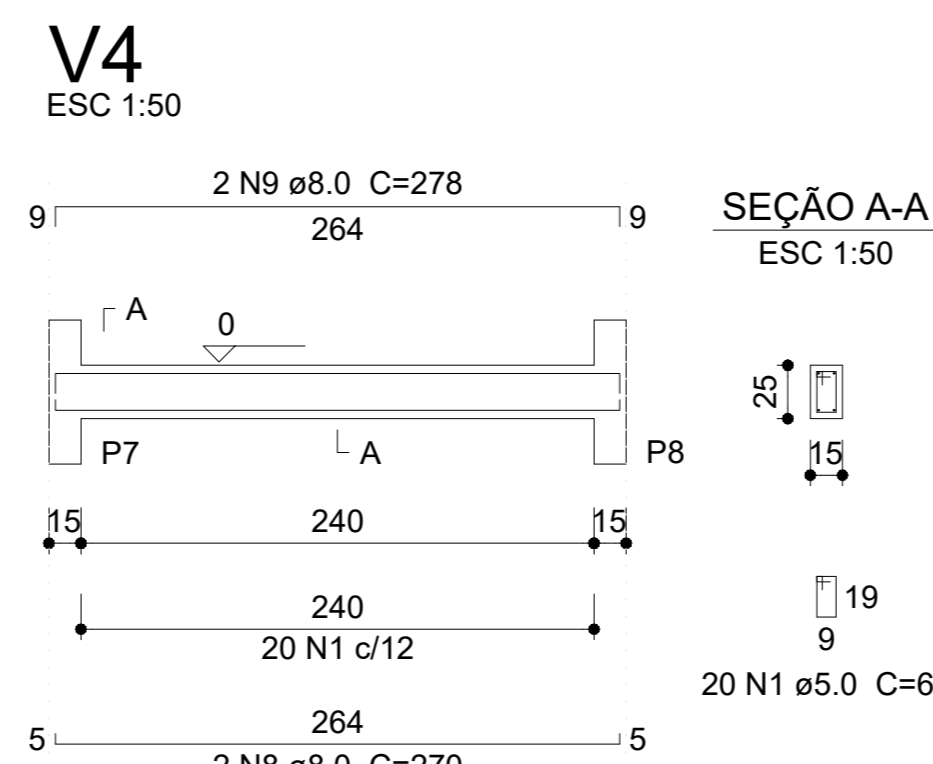
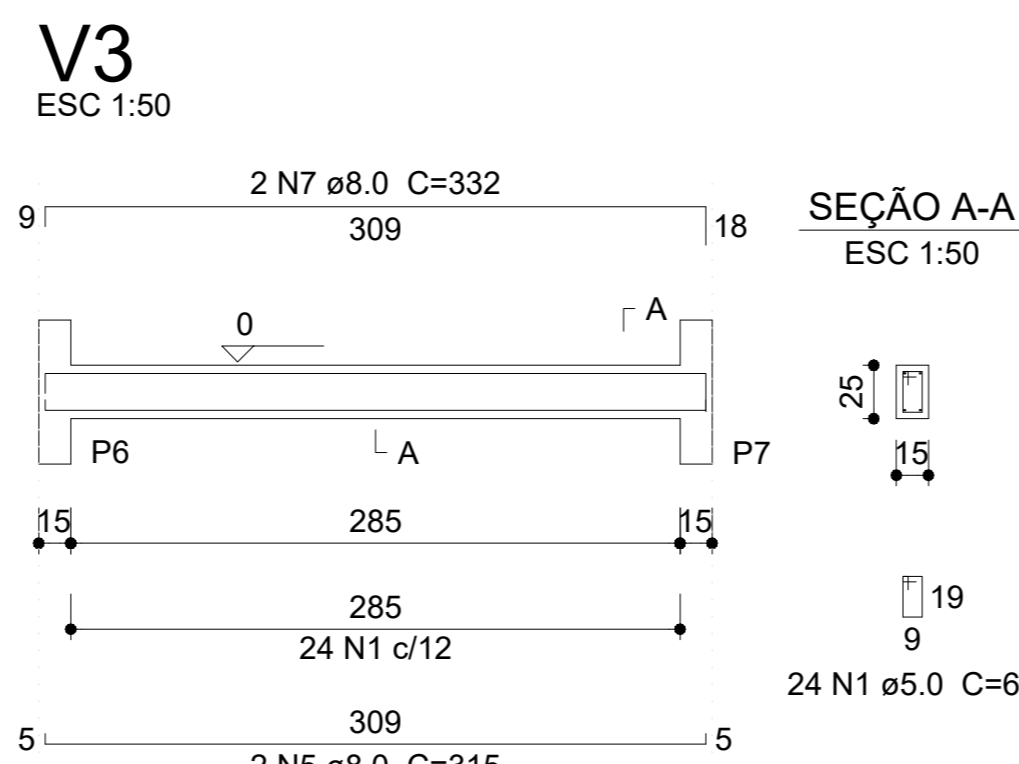
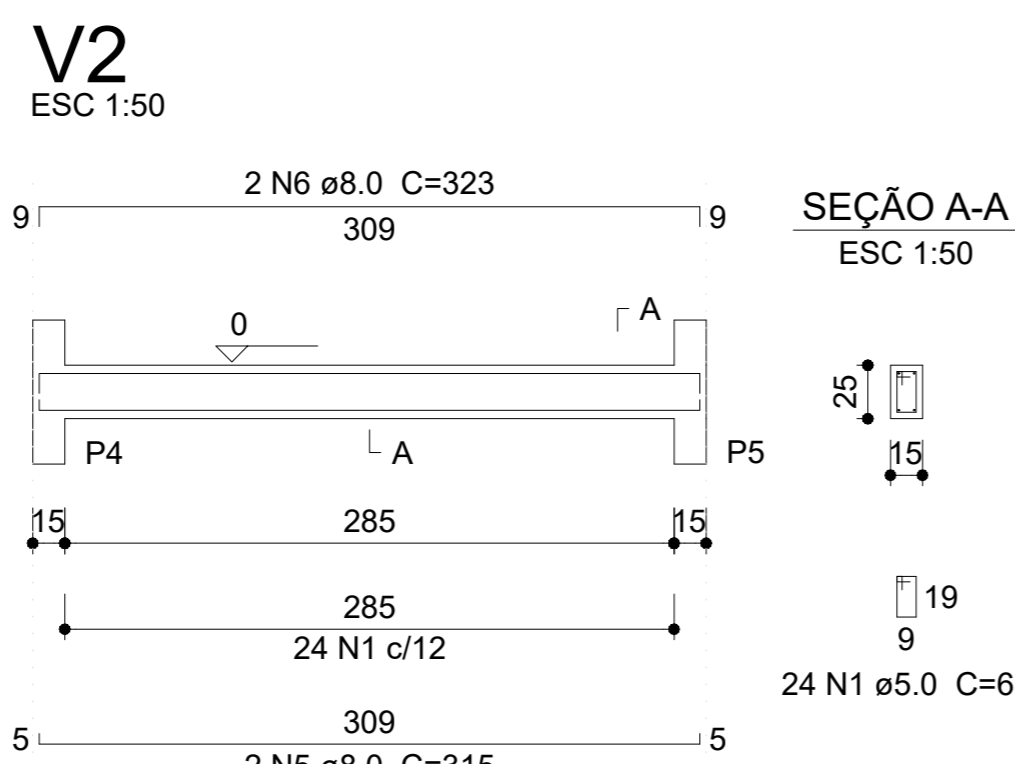
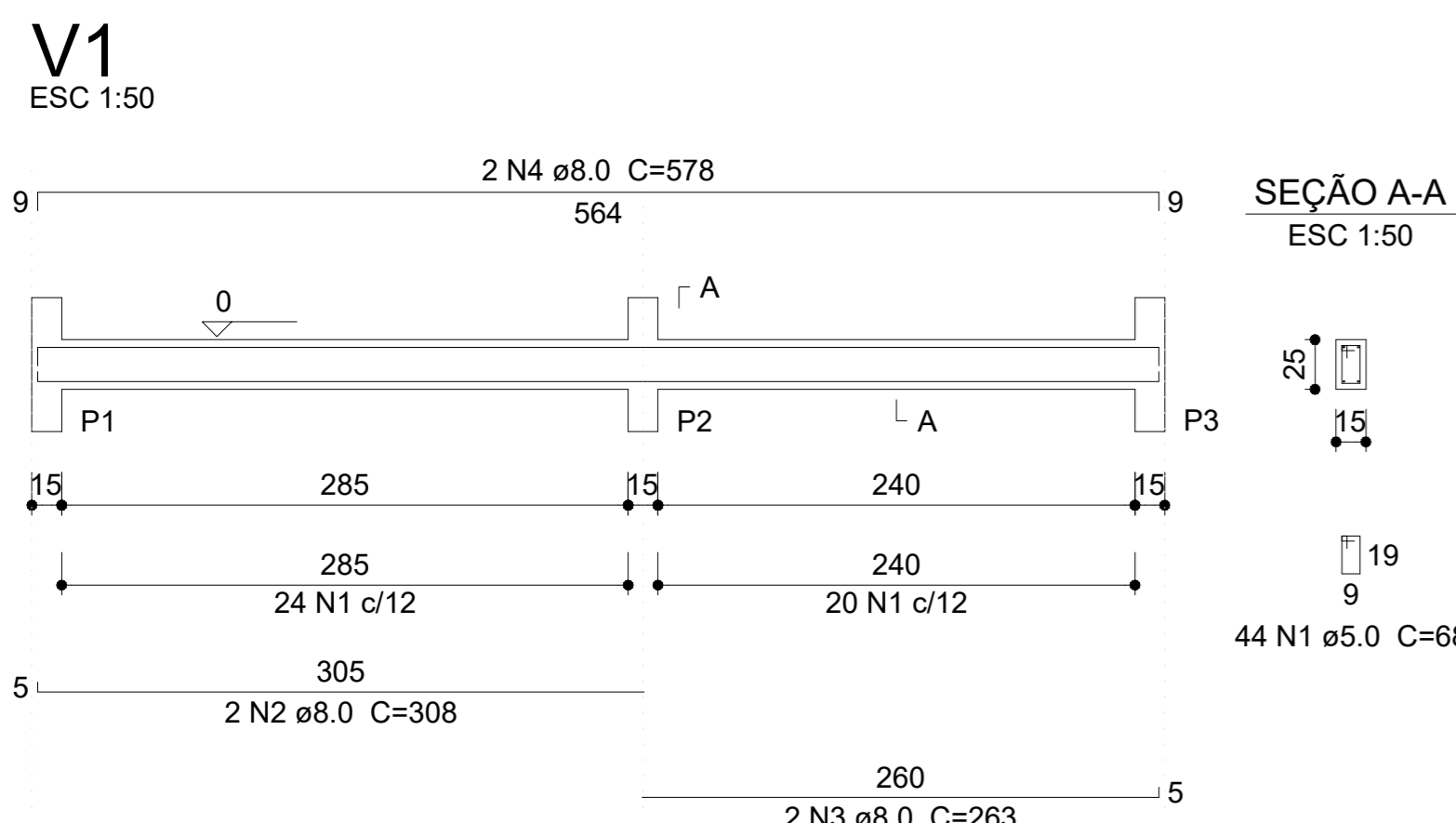
16xP1		16xS1			
AÇO	N	DIAM	Q	UNIT (cm)	C.TOTAL (cm)
CA60	1	5.0	224	68	15232
CA50	2	8.0	64	178	11392
	3	8.0	96	88	8448
	4	8.0	96	93	8928

RESUMO DO ACC

AÇO	DIAM	C.TOTAL (m)	PESO (kg)
CA50	8.0	287.7	112.41
CA60	5.0	152.4	23.22
PESO TOTAL			
CA50	112.41		
CA60	23.22		

Vol. de concreto total (C-25) = 0.72 m³
Vol. de concreto total (C-20) = 1.56 m³
Área de forma total = 25.36 m²

VIGAS BALDRAMES NÍVEL^{0,00}



RELAÇÃO DO AÇO VIGAS BALDRAME

V1	V2	V3	V4	V5	V6	V7	V8	V9	V10	V11	V12	V13	V14	V15
AÇO	N	D	DIAM	Q	UNIT	C. TOTAL	C. TOTAL							
					(cm)	(cm)								
CA60				5.10	435	68	2958							
CA50				2	8.0	2	308							
				3	8.0	2	308							
				4	8.0	2	378							
				5	8.0	10	315							
				6	8.0	6	332							
				7	8.0	4	332							
				8	8.0	6	270							
				9	8.0	6	278							
				10	8.0	4	128							
				11	8.0	2	231							
				12	8.0	2	422							
				13	8.0	2	232							
				14	8.0	4	127							
				15	8.0	2	965							
				16	8.0	2	488							
				17	8.0	2	345							
				18	8.0	2	245							
				19	8.0	2	249							
				20	8.0	2	930							

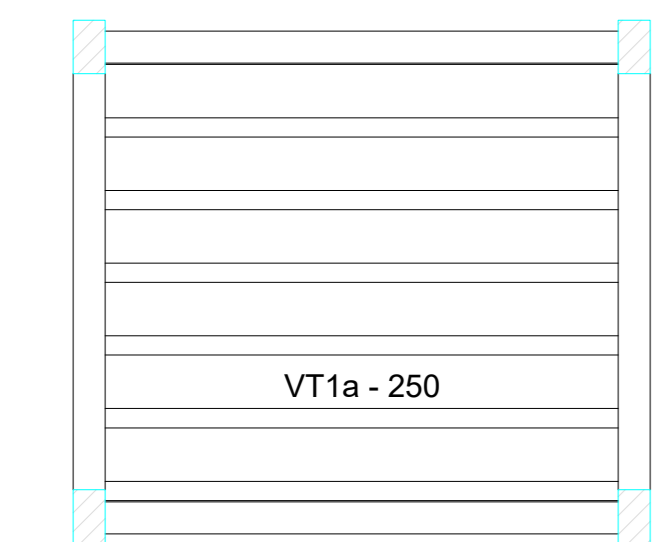
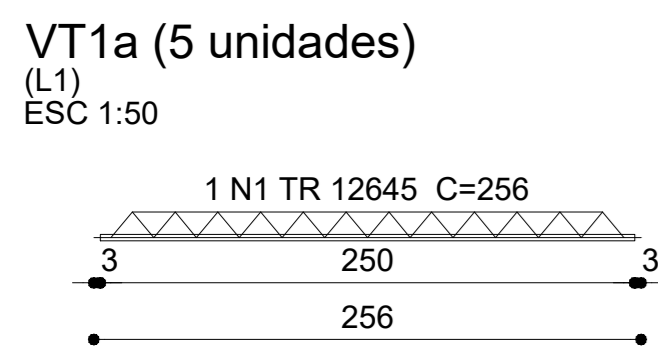
RESUMO DO ACC

AÇO	DIAM	C.TOTAL (m)	PESO (kg)
CA50	8.0	238.9	93.33
CA60	5.0	295.8	45.18
PESO TOTAL			
CA50	93.33	Vol. de concreto total (C-25) = 1.00 m³ Área de forma total = 36.03 m²	
CA60	45.18		

Vol. de concreto total (C-25) = 2.23 m³
Área de forma total = 26.02 m²

Projeto	PROJETO DE ESTRUTURAS DE CONCRETO ARMADO		
Título	UNIDADE HABITACIONAL - MCMV FNHIS		
Propriedade	PREFEITURA MUNICIPAL DE PIMENTEIRAS - PI		
REVISÕES: <div style="border: 1px solid black; padding: 5px; margin-top: 5px;"> - Rev 00 </div>	Escala	Desenho	Conteúdo da Planilha <div style="border: 1px solid black; padding: 5px; margin-top: 5px;"> INFRAESTRUTURA - FUNDAÇÕES, ARRANQUES DE PILARES E VIGAS BALDRAMES, RELAÇÕES DO AÇO E RESUMO DO AÇO. </div>
Indicada	Data	Endereço da Obra	Folha <div style="border: 1px solid black; padding: 5px; margin-top: 5px; text-align: center;"> A1 Nº Planilha 02/04 </div>
PROJETO CONSTRUÇÃO OBRAS	2025	ZONA URBANA	

VIGOTAS DA LAJE



Planta de vigotas pré-moldadas escala 1:50

RELAÇÃO DO AÇO

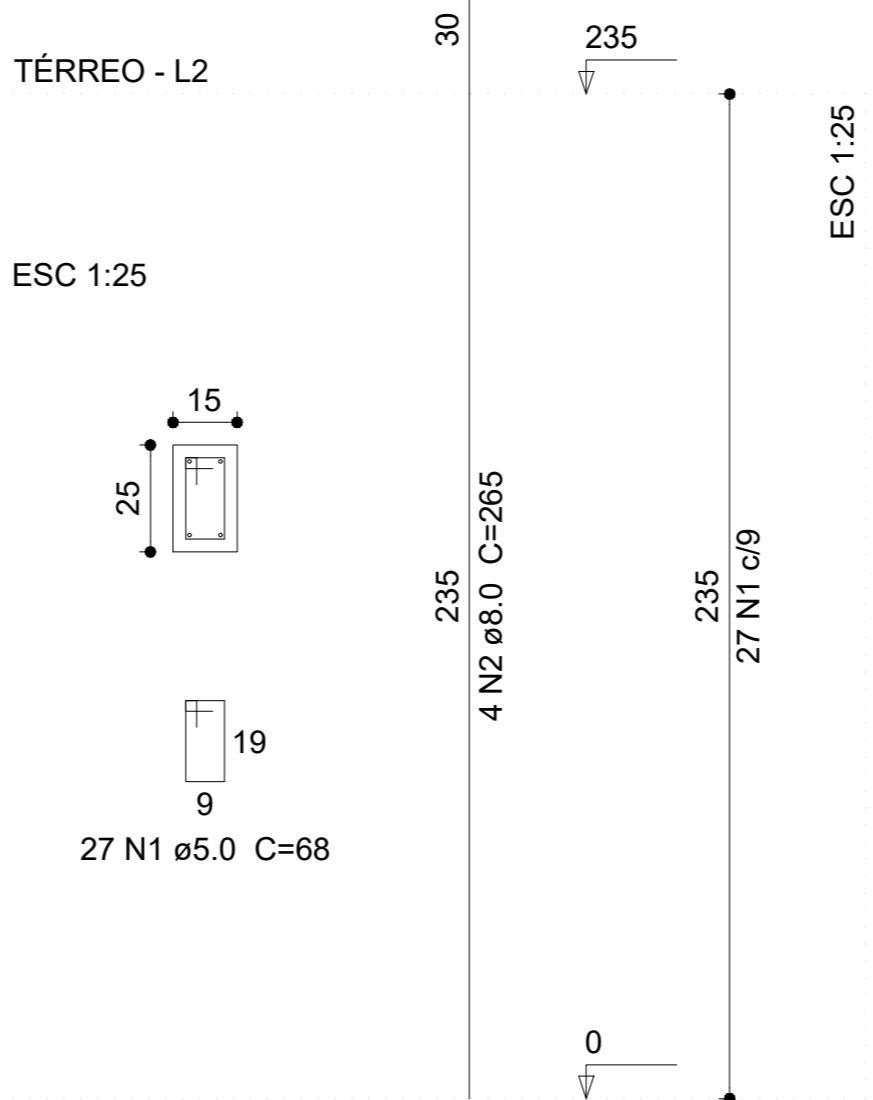
AÇO	N	DIAM	Q	UNIT (cm)	C.TOTAL (cm)
CA60	1	TR 12645	5	256	1280

RESUMO DO AÇO

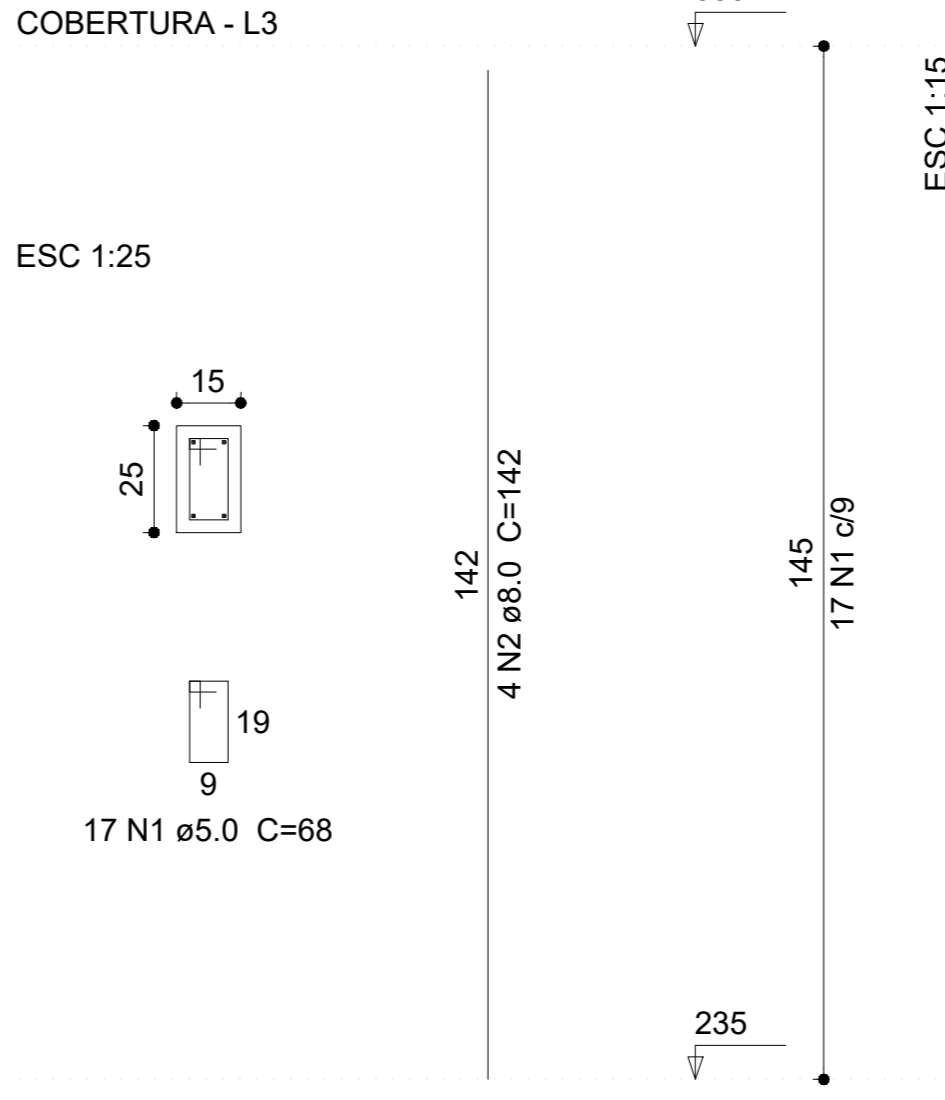
AÇO	DIAM	C.TOTAL (m)	PESO + 10 % (kg)
CA60	TR 12645	12.8	12.5
PESO TOTAL			
CA60		12.5	

PILARES

P1=P2=P3=P4=P5=P6=P7=P8=P9=P10=P11=P12
=P13=P14=P16



P1=P2=P3=P4=P5=P6=P7=P8=P9=P10=P11=P12
=P13=P14=P15=P16



RELAÇÃO DO AÇO DOS PILARES

15xP1 + 16xP1

AÇO	N	DIAM	Q	UNIT (cm)	C.TOTAL (cm)
CA60	1	5.0	677	136	46036
CA50	2	8.0	124	407	24.988

RESUMO DO AÇO

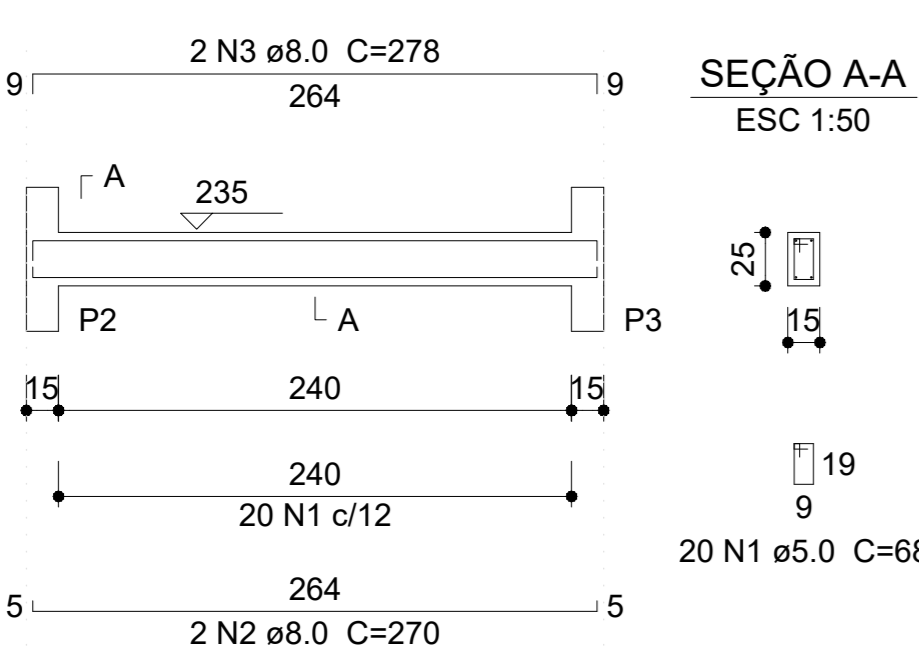
AÇO	DIAM	C.TOTAL (m)	PESO + 10 % (kg)
CA50	8.0	249.9	
CA60	5.0	460.4	
PESO TOTAL			
CA50	97.56		
CA60	70.68		

Vol. de concreto total (C-25) = 2.19 m³
Área de forma total = 47.36 m²

VIGAS SUPERIORES (CINTAS) NÍVEL 2,35

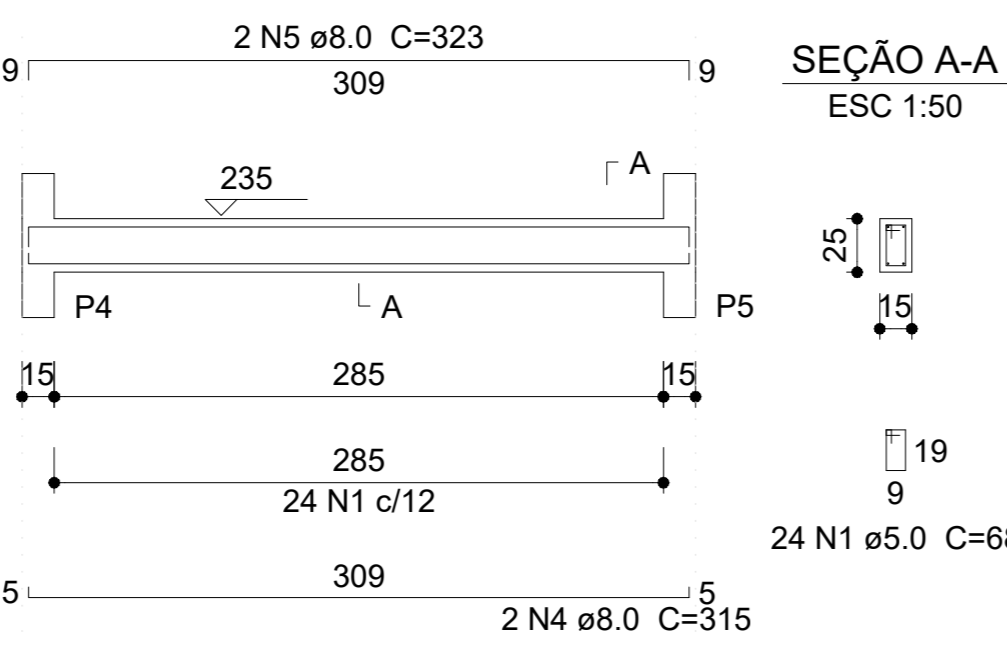
V1

ESC 1:50



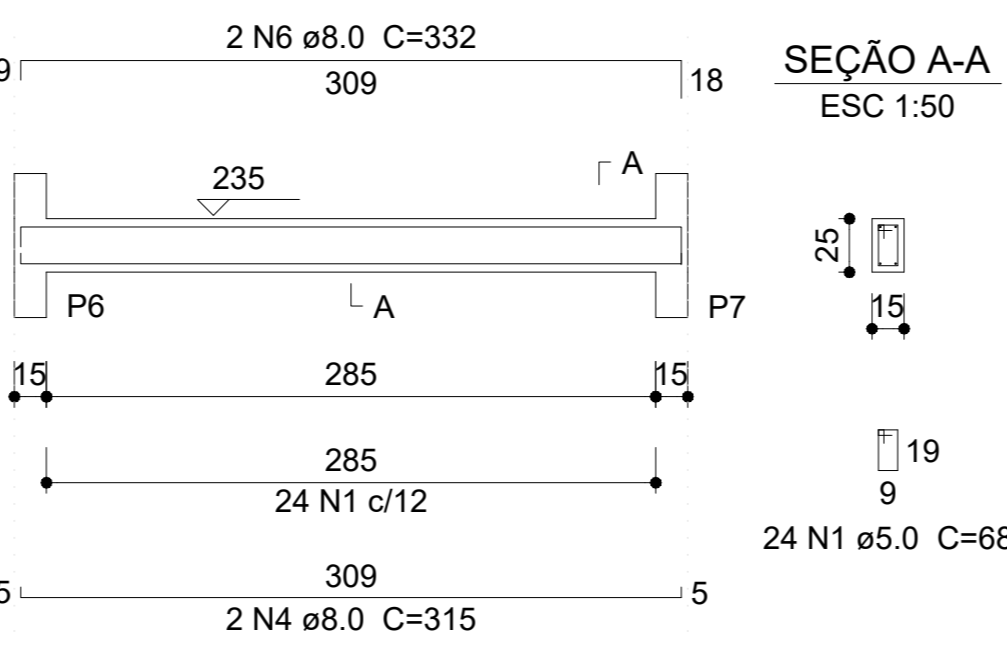
V2

ESC 1:50



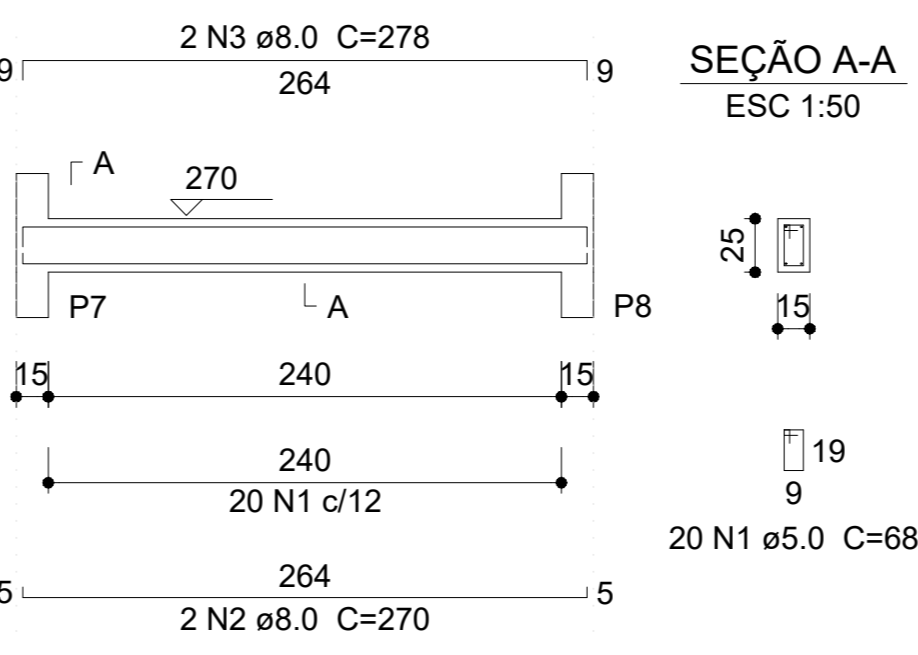
V3

ESC 1:50



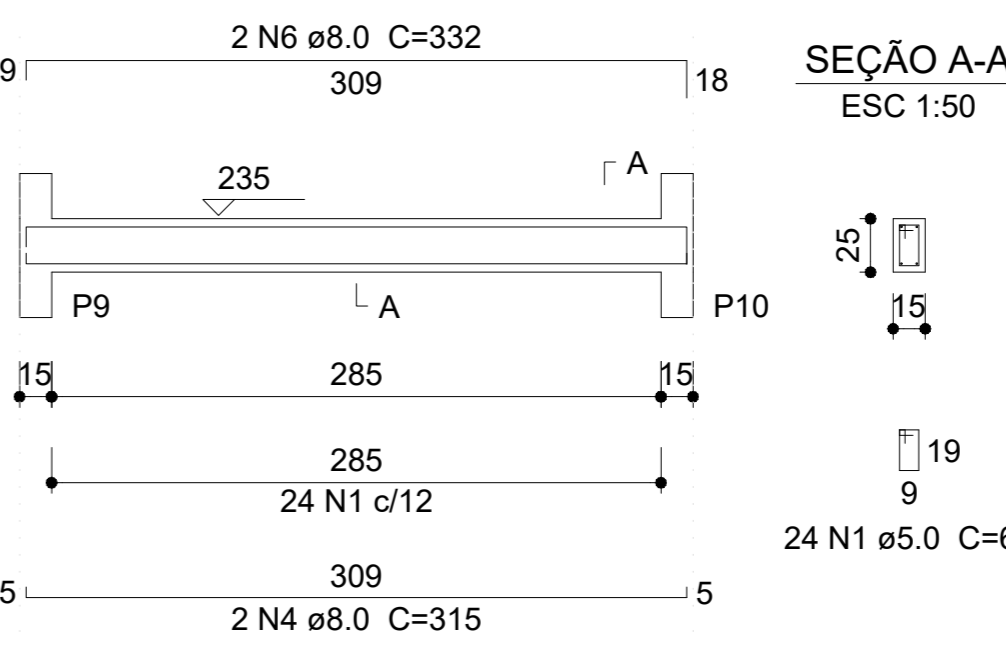
V4

ESC 1:50



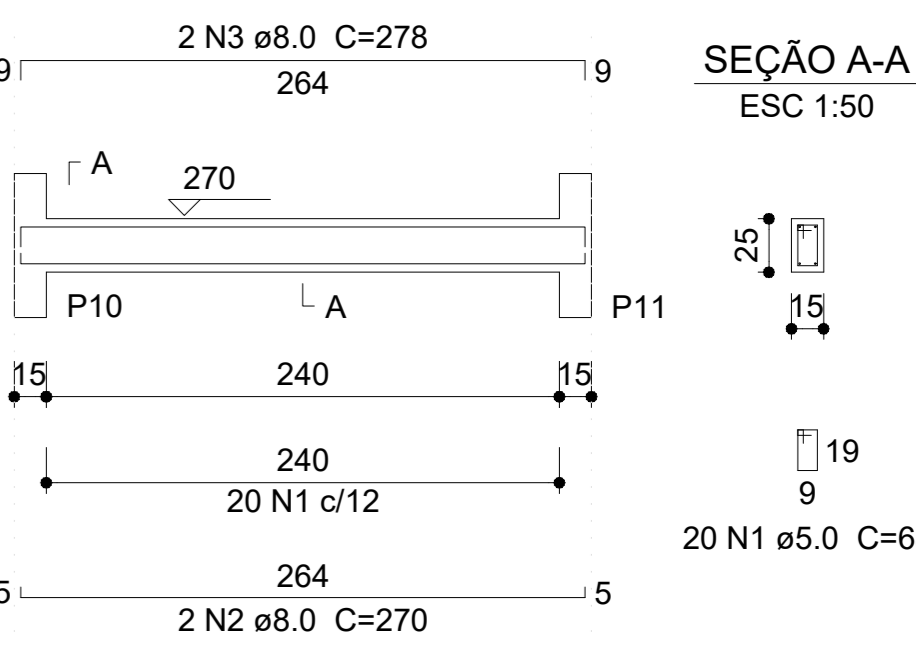
V5

ESC 1:50



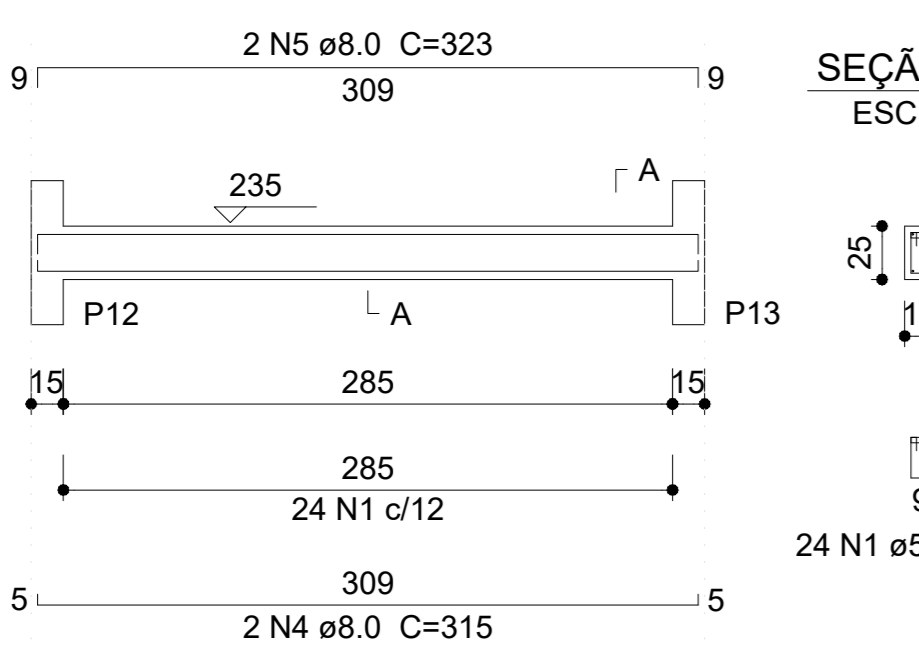
V6

ESC 1:50



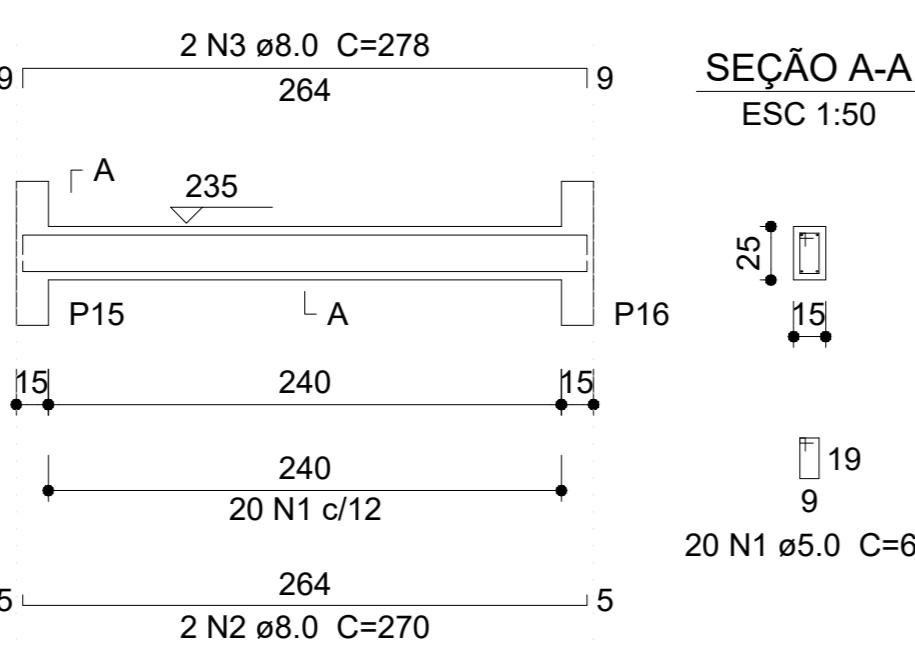
V7

ESC 1:50



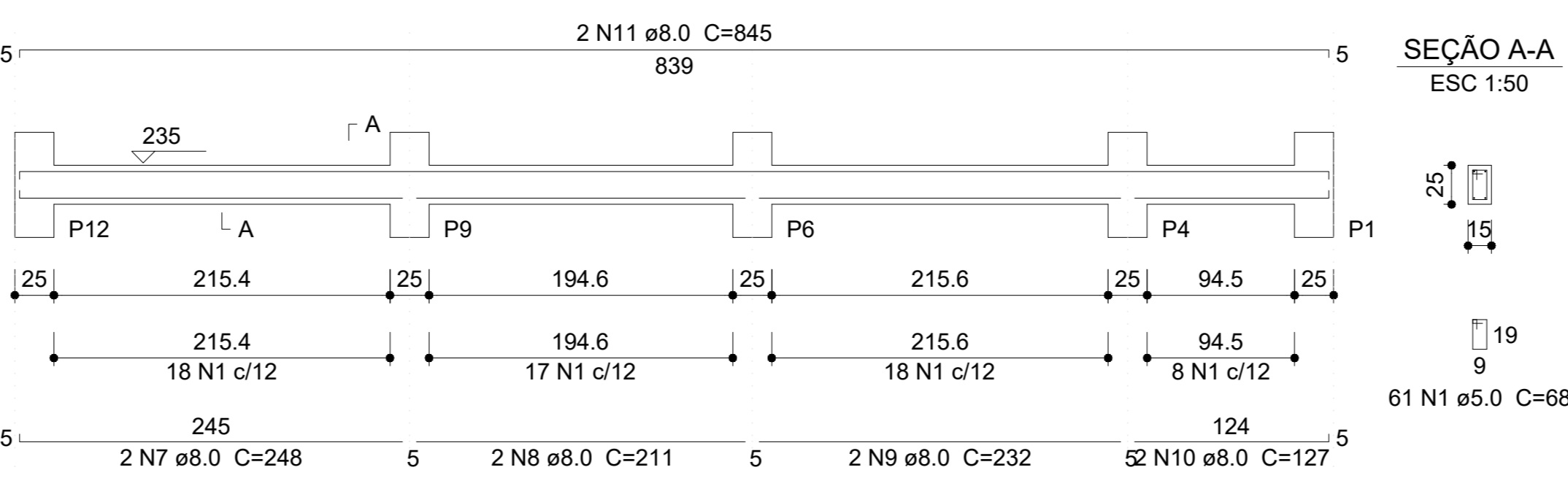
V8

ESC 1:50



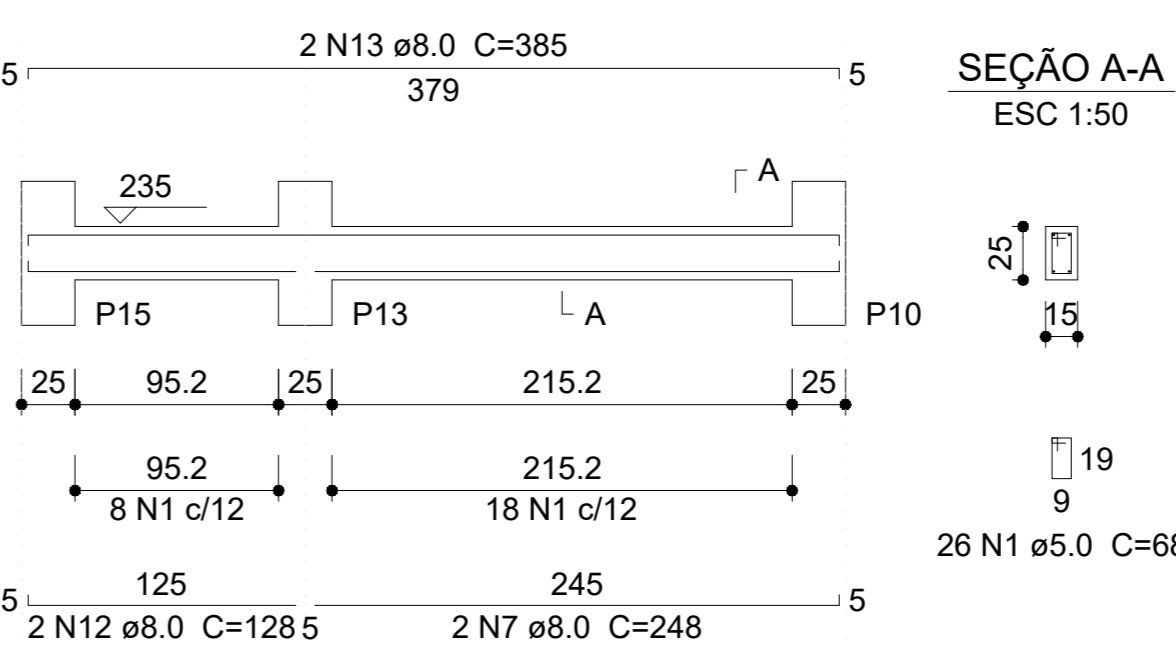
V9

ESC 1:50



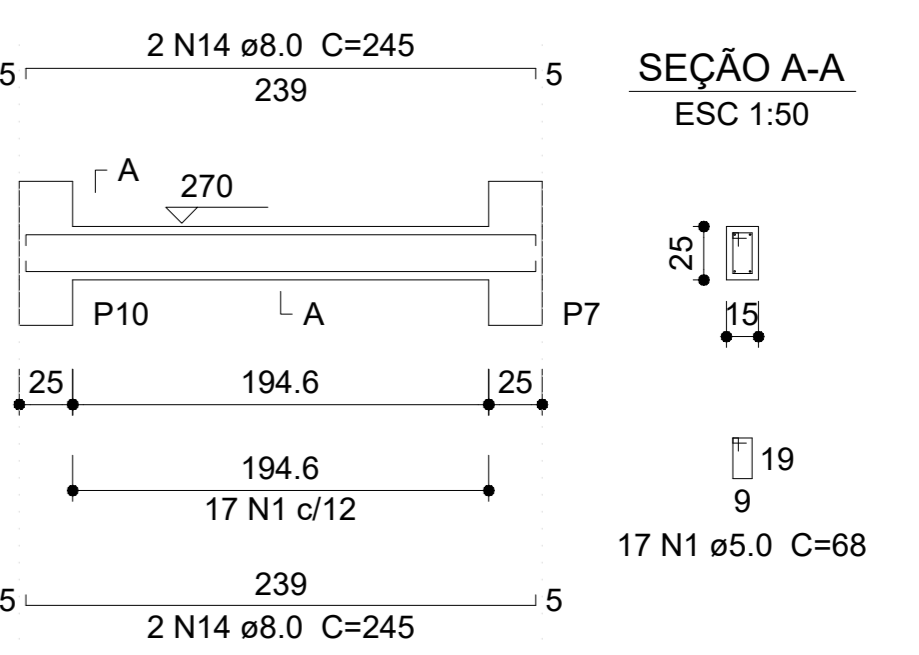
V10

ESC 1:50



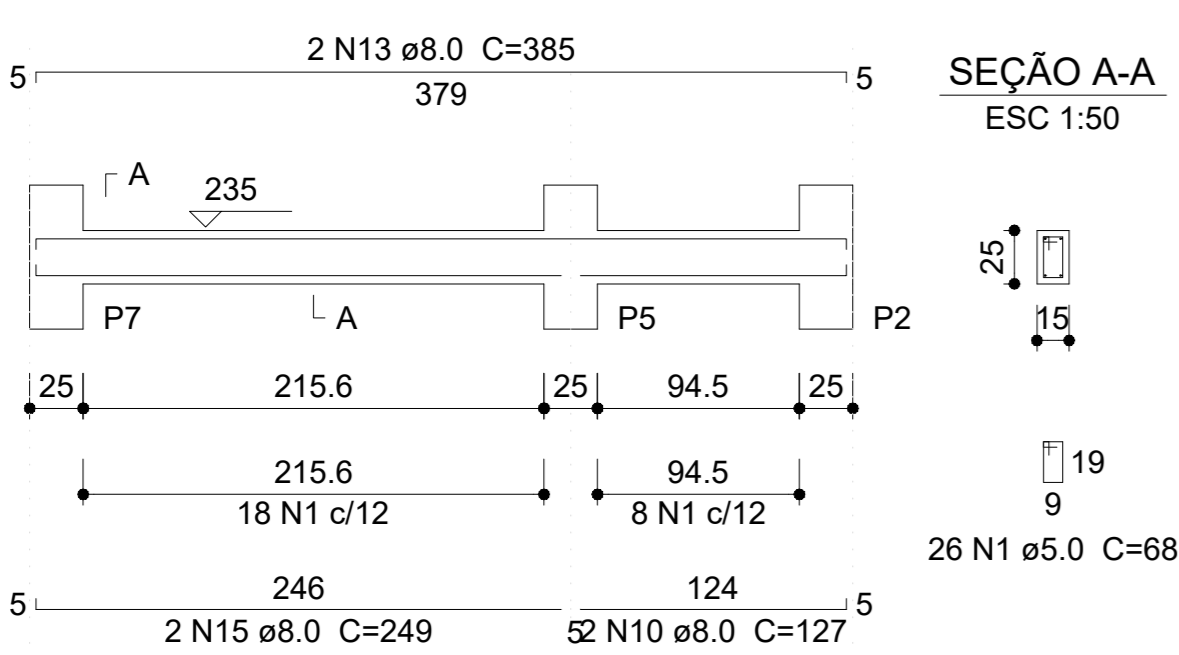
V11

ESC 1:50



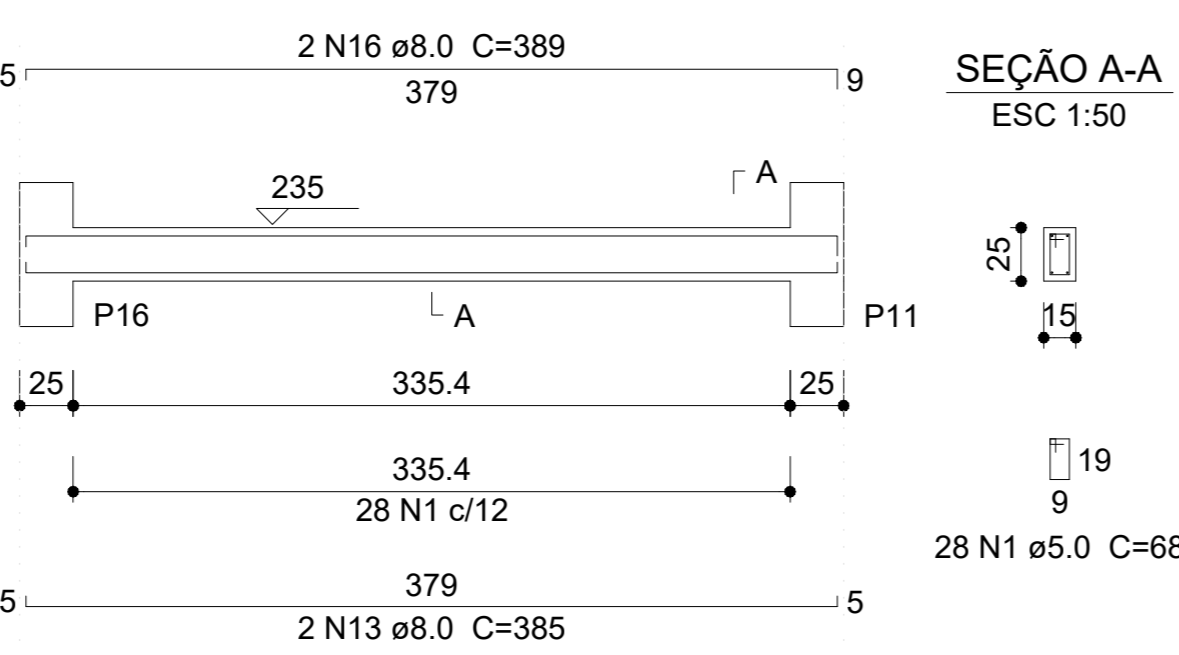
V12

ESC 1:50



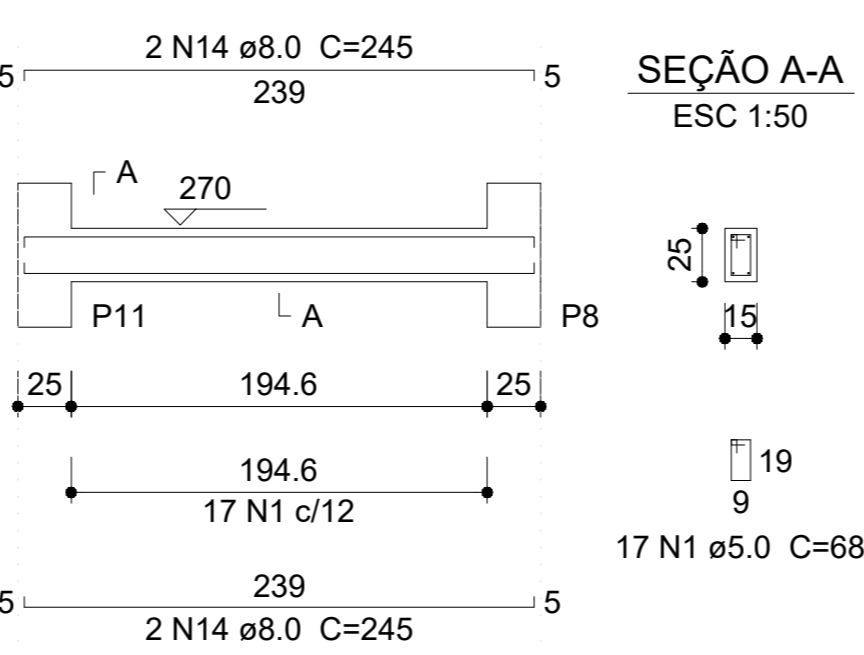
V13

ESC 1:50



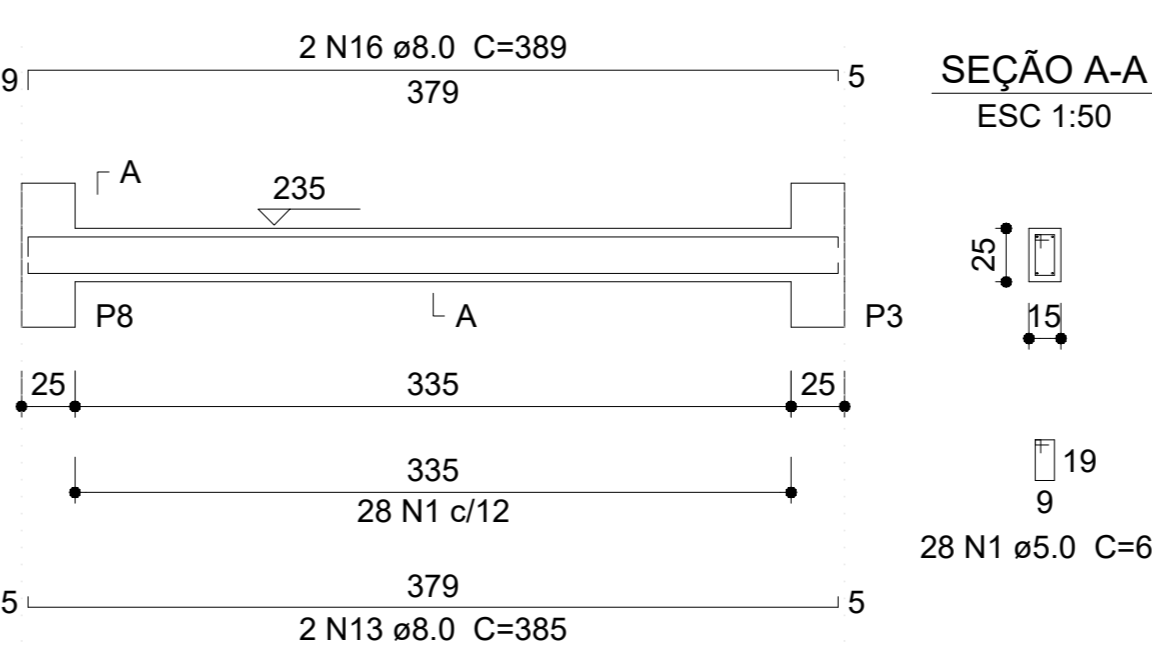
V14

ESC 1:50



V15

ESC 1:50



RELAÇÃO DO AÇO

V1	V2	V3
V4	V5	V6
V7	V8	V9
V10	V11	V12
V13	V14	V15

RESUMO DO AÇO

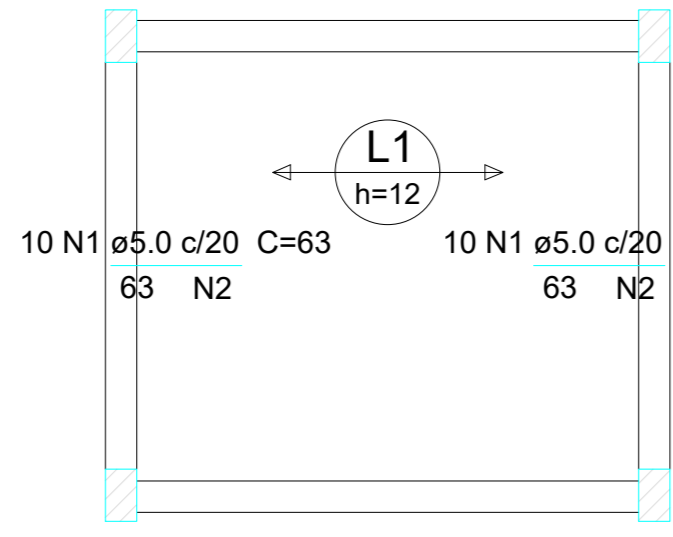
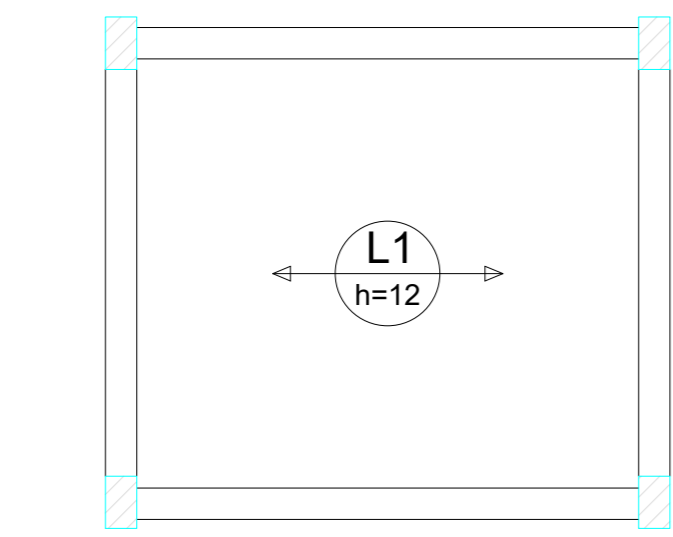
AÇO	DIAM	C.TOTAL (m)	PESO (kg)
CA50	8.0	209.5	81.81
CA60	5.0	257.8	39.33
PESO TOTAL			
CA50	81.81		
CA60	39.33		

Vol. de concreto total (C-25) = 1.96 m³
Área de forma total = 26.13 m²

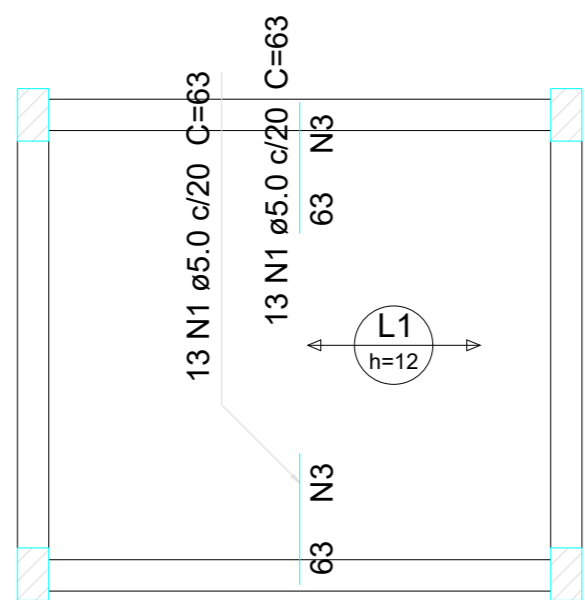
AÇO	N	DIAM	Q	UNIT (cm)	C.TOTAL (cm)
CA60	1	5.0	379	68	25772
CA50	2	8.0	8	270	2160
	3	8.0	8	278	2224
	4	8.0	8	315	2520
	5	8.0	4	323	1292
	6	8.0	4	332	1328
	7	8.0	4	248	992
	8	8.0	2	211	422
	9	8.0	2	232	464
	10	8.0	4	127	508
	11	8.0	2	845	1690
	12	8.0	2	128	256
	13	8.0	8	395	3060
	14	8.0	8	245	1960
	15	8.0	2	249	498
	16	8.0	4	389	1556

Projeto			
Título			
Proprietário			
REVISÕES:			
- Rev 00			
Conteúdo da Prancha			
SUPERESTRUTURA - PILARES, VIGOTAS DA LAJE, VIGAS SUPERIORES (CINTAS), RELAÇÕES DO AÇO E RESUMO DO AÇO.			
Folha			
A1			
03/04			
Escala		Desenho	
Indicada		Data	
		2025	
		Endereço da Obra	
		ZONA URBANA	
PROJETO			
CONSTRUÇÃO			
CLIENTE			

Armação positiva da laje do banheiro (Eixo X)
escala 1:50



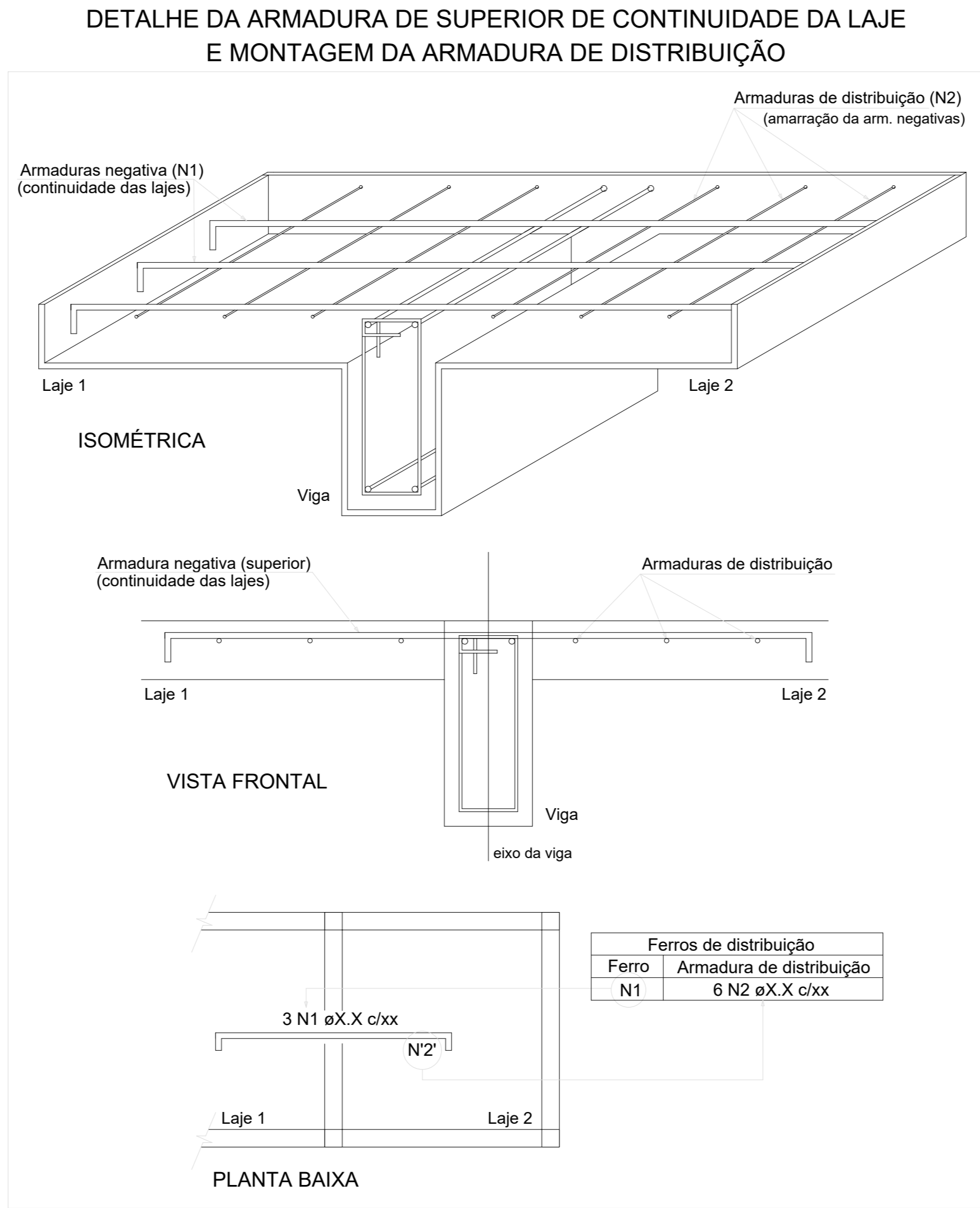
Armação negativa da laje do banheiro (Eixo X)
escala 1:50



Armação negativa da laje do banheiro (Eixo Y)
escala 1:50

Feros de distribuição	
Ferro	Armadura de distribuição
N1	4 N2 ø5.0 c/20 C=210
N1	4 N2 ø5.0 c/20 C=210

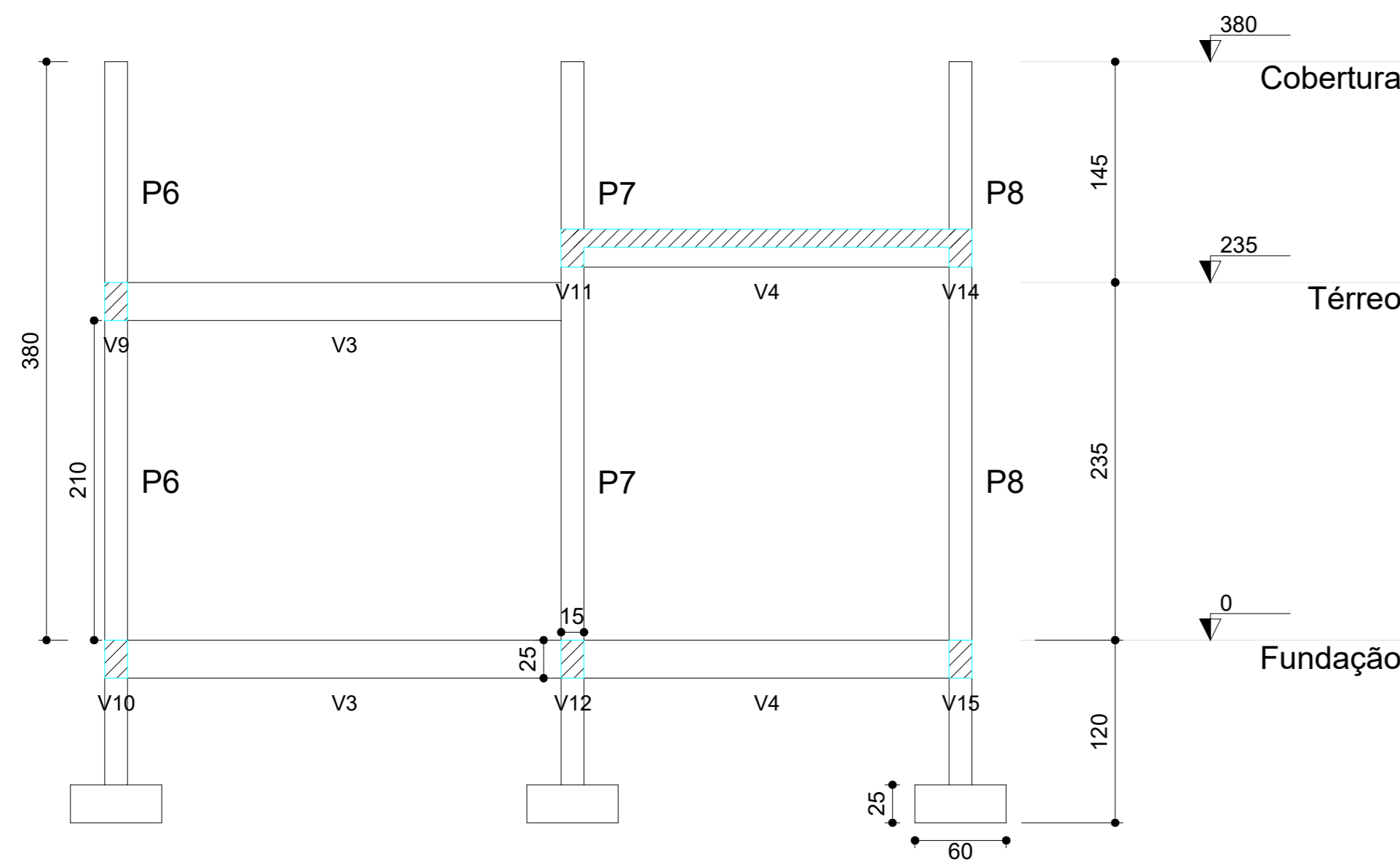
Feros de distribuição	
Ferro	Armadura de distribuição
N1	4 N3 ø5.0 c/20 C=255
N1	4 N3 ø5.0 c/20 C=255



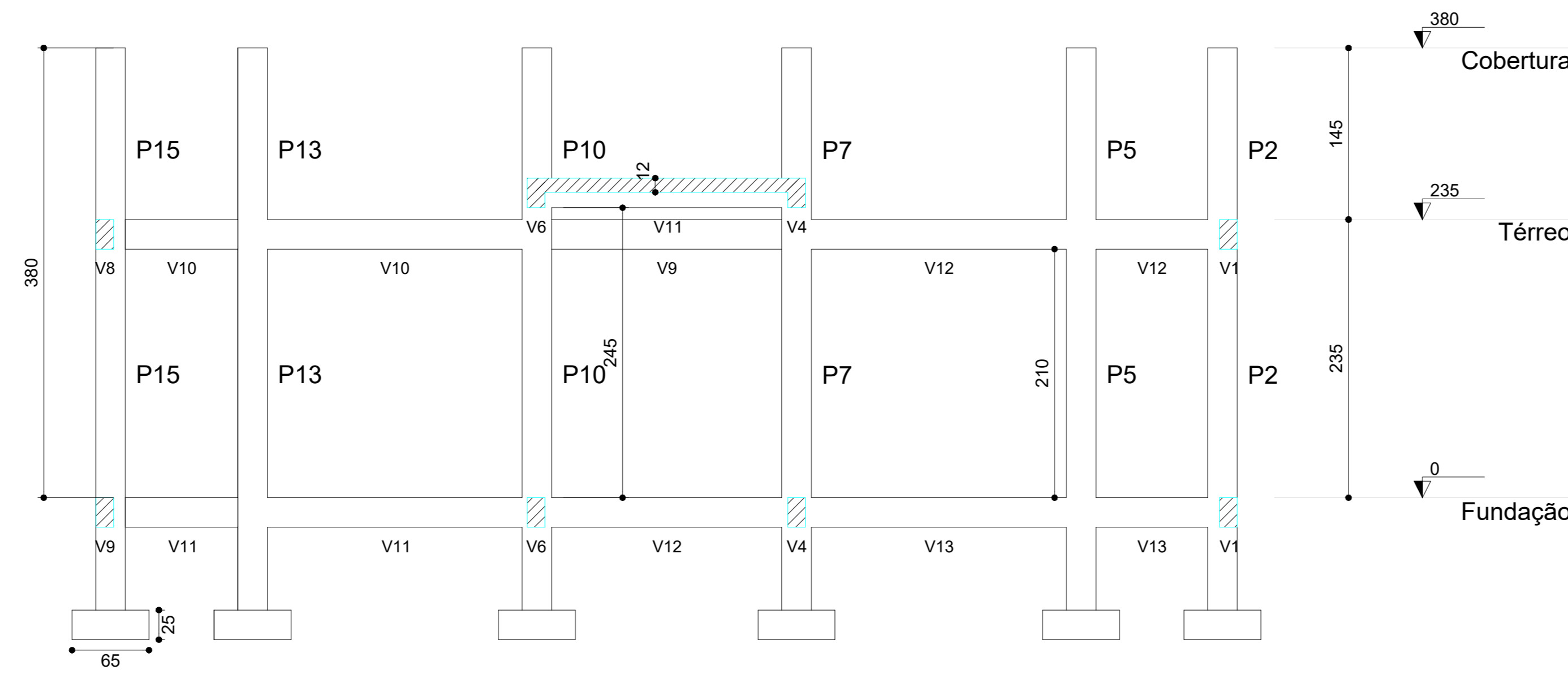
DETALHE DA ARMADURA DE SUPERIOR DE CONTINUIDADE DA LAJE
E MONTAGEM DA ARMADURA DE DISTRIBUIÇÃO

Relação do aço					
Negativos X			Negativos Y		
AÇO	N	DIAM	Q	UNIT (cm)	C.TOTAL (cm)
CA60	1	5.0	46	63	2898
	2	5.0	8	210	1680
	3	5.0	8	255	2040

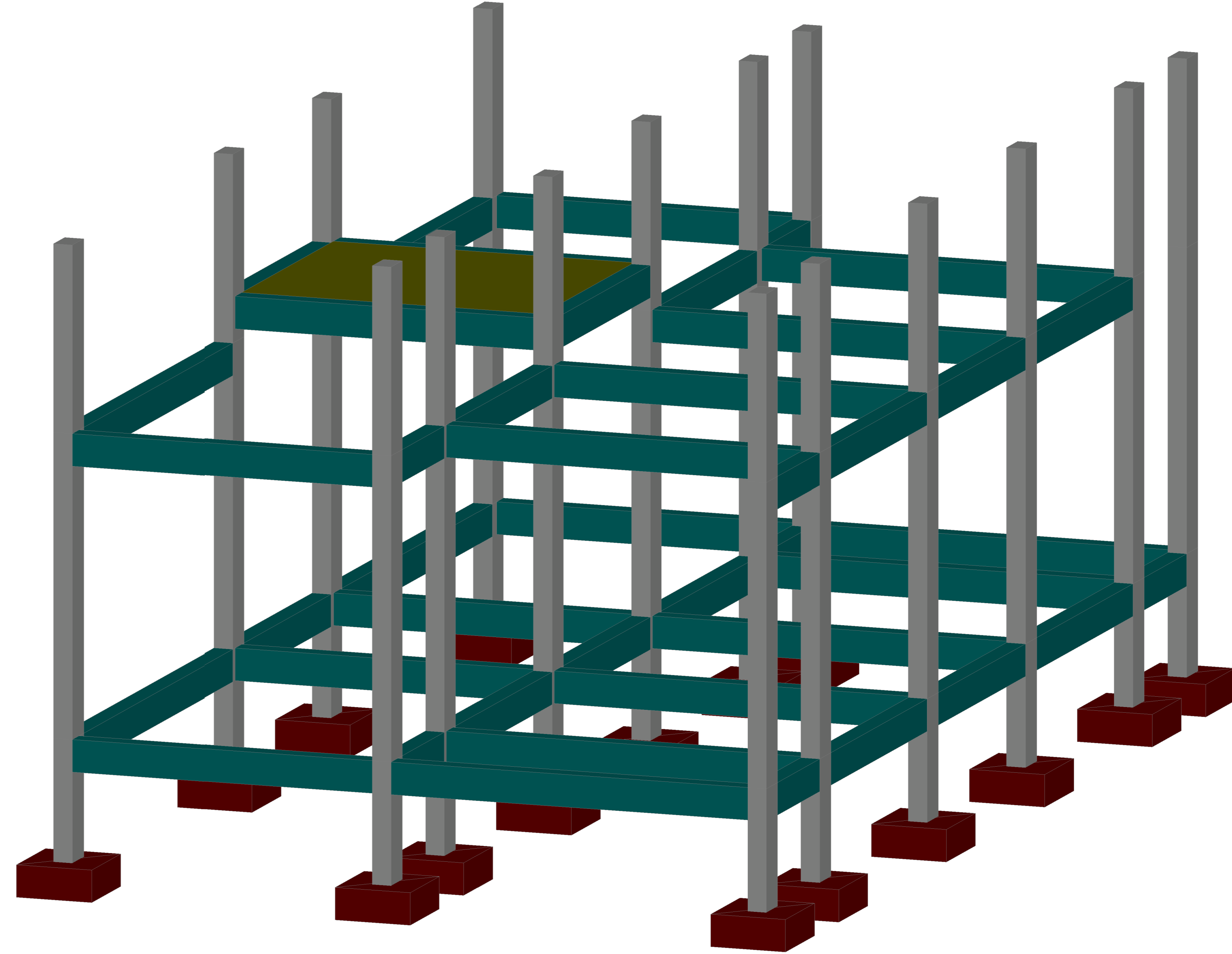
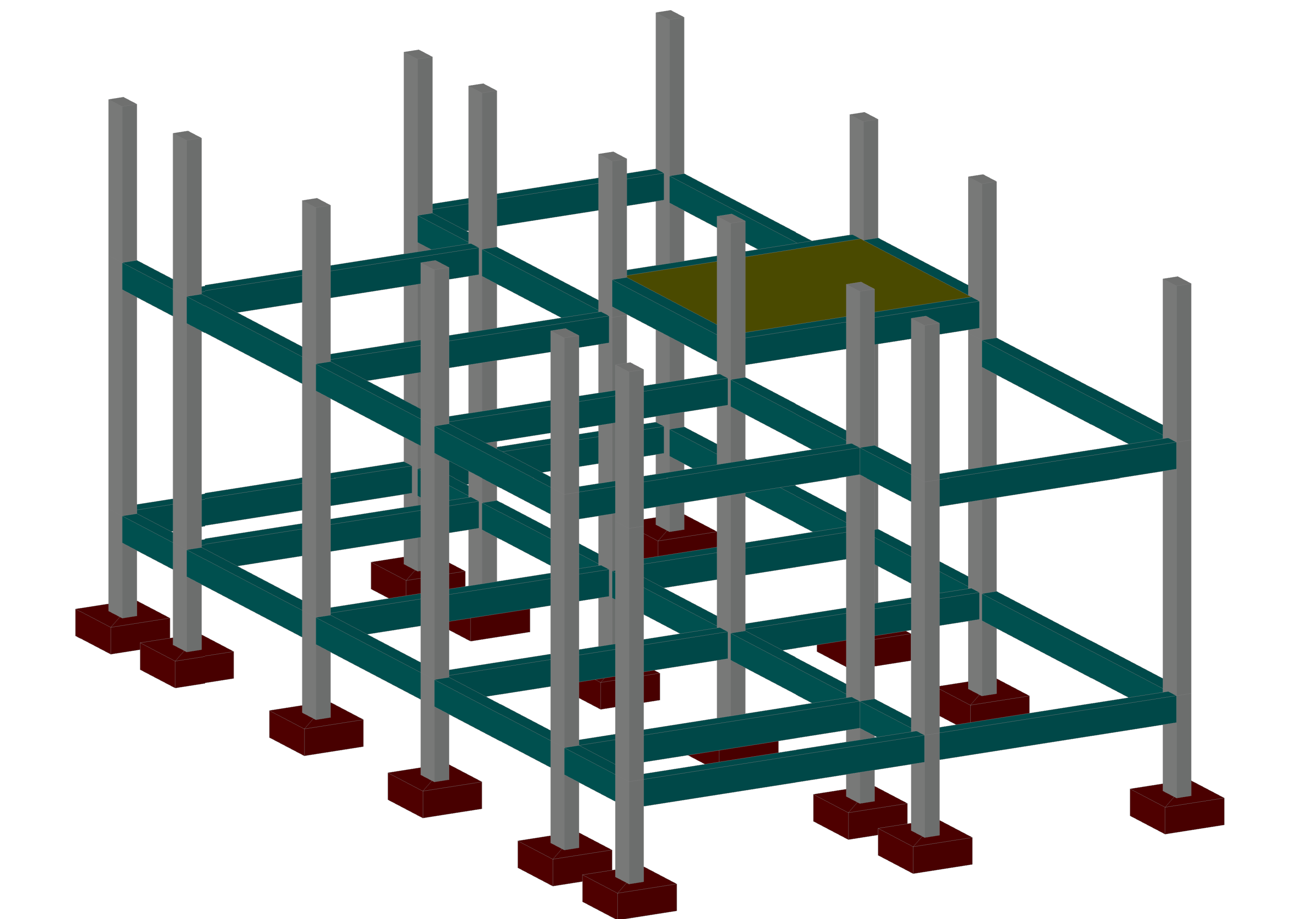
Resumo do aço			
AÇO	DIAM	C.TOTAL (m)	PESO + 10 % (kg)
CA60	5.0	66.2	11.2
PESO TOTAL			
CA60	11.2		



Corte A-A
escala 1:50



Corte B-B
escala 1:50



Projeto	PROJETO DE ESTRUTURAS DE CONCRETO ARMADO		
Título	UNIDADE HABITACIONAL - MCMV FNHIS		
Proprietário	PREFEITURA MUNICIPAL DE PIMENTEIRAS - PI		
REVISÕES:	Conteúdo da Prancha		Folha
- Rev 00	PLANTA DE ARMADURAS POSITIVAS E NEGATIVAS DAS LAJES, CORTES E VISTAS 3D.		A1
Escala	Desenho	Data	Endereço da Obra
Indicada		2025	ZONA URBANA
PROJETO			
CONSTRUÇÃO			
CLIENTE			